

Configuration Guide

NCP Remote Access VPN Client for Juniper SRX



IKEv1 AGGRESSIVE Pre-shared key

You can use the NCP Secure Enterprise Management Server as a RADIUS server to authenticate users.

IKEv1 AGGRESSIVE Mode and Pre-shared key

This configuration example uses the NCP Secure Enterprise Management Server as a RADIUS server to authenticate users

CLI Quick Configuration

```
set security policies default-policy permit-all
set interfaces st0 unit 0 family inet address 172.16.10.200/24
set security zones security-zone internet interfaces st0.0 host-inbound-traffic system-services all
set security zones security-zone internet interfaces st0.0 host-inbound-traffic protocols all
set security ike proposal IKE_PROP authentication-method pre-shared-keys
set security ike proposal IKE_PROP dh-group group19
set security ike proposal IKE_PROP authentication-algorithm sha-256
set security ike proposal IKE_PROP encryption-algorithm aes-256-cbc
set security ike proposal IKE_PROP lifetime-seconds 10000
set security ike policy IKE_POL mode aggressive
set security ike policy IKE_POL proposals IKE_PROP
set security ike policy IKE_POL pre-shared-key ascii-text "12345678"
set security ike gateway RAVPN_GW ike-policy IKE_POL
set security ike gateway RAVPN_GW dynamic hostname ncp.juniper.net
set security ike gateway RAVPN_GW dynamic user-at-hostname test@ncp.juniper.net
set security ike gateway RAVPN_GW dynamic connections-limit 100
set security ike gateway RAVPN_GW dynamic ike-user-type shared-ike-id
set security ike gateway RAVPN_GW external-interface ge-0/0/0
set security ike gateway RAVPN_GW aaa access-profile radius
set security ike gateway RAVPN_GW version v1-only
set security ipsec proposal IPSEC_PROP protocol esp
set security ipsec proposal IPSEC_PROP encryption-algorithm aes-256-gcm
```

Configuration Guide

NCP Remote Access VPN Client for Juniper SRX



```
set security ipsec proposal IPSEC_PROP lifetime-seconds 3600
set security ipsec policy IPSEC_POL perfect-forward-secrecy keys group19
set security ipsec policy IPSEC_POL proposals IPSEC_PROP
set security ipsec vpn RAVPN_VPN bind-interface st0.0
set security ipsec vpn RAVPN_VPN ike gateway RAVPN_GW
set security ipsec vpn RAVPN_VPN ike ipsec-policy IPSEC_POL
set security ipsec vpn RAVPN_VPN traffic-selector TS1 local-ip 0.0.0.0/0
set security ipsec vpn RAVPN_VPN traffic-selector TS1 remote-ip 0.0.0.0/0
set access profile radius authentication-order radius
set access profile radius radius-server 10.20.46.235 port 1812
set access profile radius address-assignment pool NCP_POOL
set access profile radius radius-server 10.20.46.235 secret "12345678"
set access address-assignment pool NCP_POOL family inet network 172.16.10.0/24
set access address-assignment pool NCP_POOL family inet xauth-attributes primary-dns 172.16.10.10/32
set access address-assignment pool NCP_POOL family inet xauth-attributes primary-wins 172.16.10.20/32
set security ike gateway RAVPN_GW tcp-encap-profile NCP
set security tcp-encap profile NCP
commit
```

Step-by-step Procedure

1) Define tunnel interface and policies

```
set security policies default-policy permit-all
set interfaces st0 unit 0 family inet address 172.16.10.200/24
set security zones security-zone internet interfaces st0.0 host-inbound-traffic system-services all
set security zones security-zone internet interfaces st0.0 host-inbound-traffic protocols all
```

2) Create IKE proposals (policies)

```
set security ike proposal IKE_PROP authentication-method pre-shared-keys
set security ike proposal IKE_PROP dh-group group19
set security ike proposal IKE_PROP authentication-algorithm sha-256
set security ike proposal IKE_PROP encryption-algorithm aes-256-cbc
set security ike proposal IKE_PROP lifetime-seconds 10000
```

Configuration Guide

NCP Remote Access VPN Client for Juniper SRX



```
set security ike policy IKE_POL mode aggressive
set security ike policy IKE_POL proposals IKE_PROP
set security ike policy IKE_POL pre-shared-key ascii-text "12345678"
```

3) Create IKE gateway

```
set security ike gateway RAVPN_GW ike-policy IKE_POL
set security ike gateway RAVPN_GW dynamic hostname ncp.juniper.net
set security ike gateway RAVPN_GW dynamic connections-limit 100
set security ike gateway RAVPN_GW dynamic ike-user-type shared-ike-id
set security ike gateway RAVPN_GW dynamic user-at-hostname test@ncp.juniper.net
set security ike gateway RAVPN_GW external-interface ge-0/0/0
set security ike gateway RAVPN_GW aaa access-profile radius
set security ike gateway RAVPN_GW version v1-only
```

4) Create IPsec proposals (policies)

```
set security ipsec proposal IPSEC_PROP protocol esp
set security ipsec proposal IPSEC_PROP encryption-algorithm aes-256-gcm
set security ipsec proposal IPSEC_PROP lifetime-seconds 3600
set security ipsec policy IPSEC_POL perfect-forward-secrecy keys group19
set security ipsec policy IPSEC_POL proposals IPSEC_PROP
```

5) Define VPN interface and routing information

```
set security ipsec vpn RAVPN_VPN bind-interface st0.0
set security ipsec vpn RAVPN_VPN ike gateway RAVPN_GW
set security ipsec vpn RAVPN_VPN ike ipsec-policy IPSEC_POL
set security ipsec vpn RAVPN_VPN traffic-selector TS1 local-ip 0.0.0.0/0
set security ipsec vpn RAVPN_VPN traffic-selector TS1 remote-ip 0.0.0.0/0
```

6) Create access profile for RADIUS server

```
set access profile radius authentication-order radius
set access profile radius radius-server 10.20.46.234 port 1812
set access profile radius address-assignment pool NCP_POOL
set access profile radius radius-server 10.20.46.234 secret "12345678"
```

Configuration Guide

NCP Remote Access VPN Client for Juniper SRX



7) Create IP address pool for Remote Access Users

```
set access address-assignment pool NCP_POOL family inet network 172.16.10.0/24
set access address-assignment pool NCP_POOL family inet xauth-attributes primary-dns 172.16.10.10/32
set access address-assignment pool NCP_POOL family inet xauth-attributes primary-wins 172.16.10.20/32
```

8) Enable NCP Path Finder Technology (TCP encapsulation)

```
set security ike gateway RAVPN_GW tcp-encap-profile NCP
set security tcp-encap profile NCP
```

8) Commit changes

```
commit
```

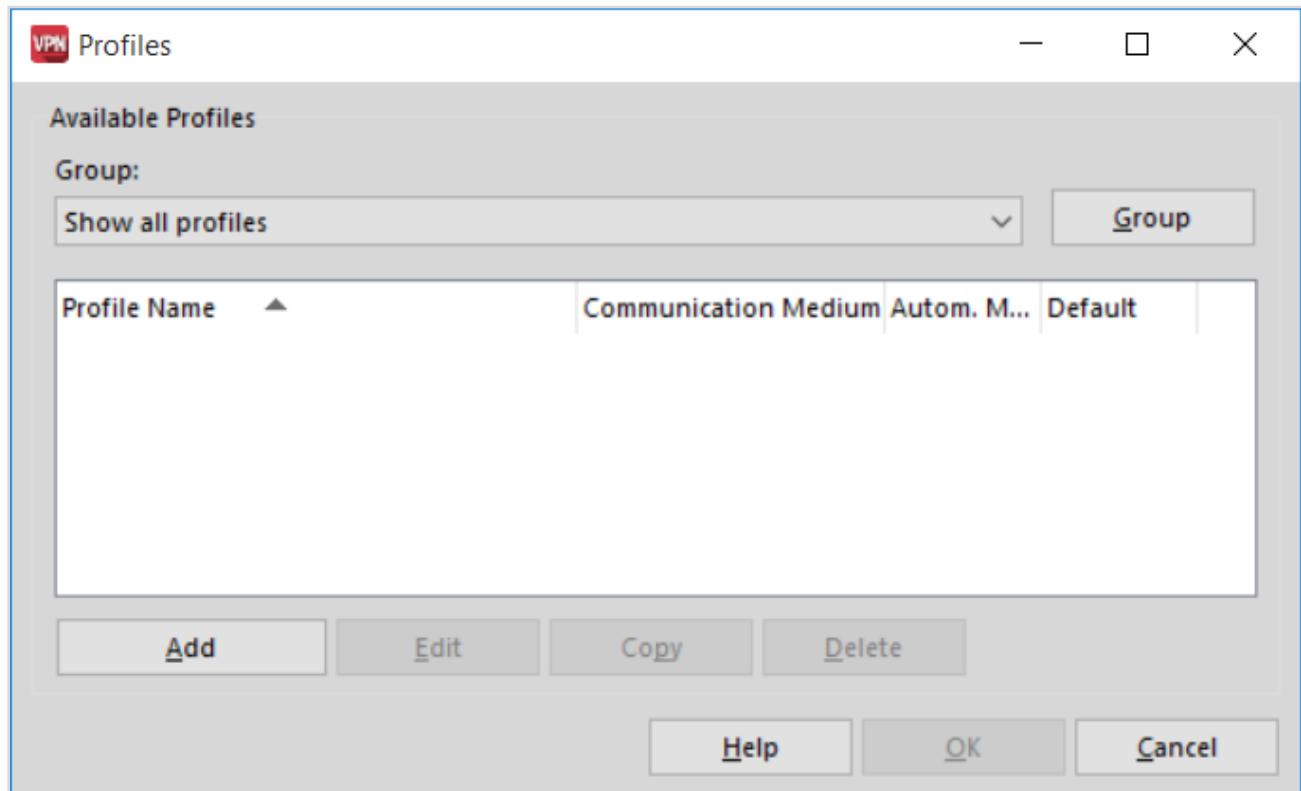
Configuration Guide

NCP Remote Access VPN Client for Juniper SRX



Configure NCP Exclusive Remote Access Client for Windows

Create new Connection Profile (Configuration – Profiles)



Click on “Add” to create a new Connection Profile

Configuration Guide

NCP Remote Access VPN Client for Juniper SRX



New Profile Wizard ✕

Basic Settings
Define the Connection Type **NCP**

Link to Corporate Network Using IPsec
Create a link to the corporate network over a virtual private network (VPN) secured by IPsec.

< Back Next Cancel

Configuration Guide

NCP Remote Access VPN Client for Juniper SRX



New Profile Wizard ✕

Profile Name
Enter the name of the profile **NCP**

The connection may be given a descriptive name; enter a name in the following field.

Profile name:

< Back Next > Cancel

Configuration Guide

NCP Remote Access VPN Client for Juniper SRX



New Profile Wizard ✕

Communication Medium
Select the Media Type **NCP**

Determine how the connection to the corporate network should be established. If the internet should be used via modem, set the connection type to "modem" and then select the appropriate modem.


Communication Medium:

Configuration Guide

NCP Remote Access VPN Client for Juniper SRX



New Profile Wizard ✕

VPN Gateway Parameters
To which VPN server should the connection be established? 

Enter the DNS name (e.g. vpnserver.domain.com) or the official IP address (e.g. 212.10.17.29) of the VPN gateway you want to connect to.

Gateway / Tunnel Endpoint
(VPN Gateway's Hostname or IP Address)

< Back Next Cancel

Configuration Guide

NCP Remote Access VPN Client for Juniper SRX



New Profile Wizard ✕

Certificate Usage
Should a certificate be used for authentication? **NCP**

For strong authentication a certificate can be used. This certificate will be checked by the VPN gateway at beginning of the connection.
Secure Client Monitor's menu item Configuration: Certificates allows for the configuration of which certificate the client is going to use.

No Certificate for Authentication
 Certificate for Authentication

Certificate Configuration
Standard certificate configuration ▼

< Back Next Cancel

Configuration Guide

NCP Remote Access VPN Client for Juniper SRX



New Profile Wizard ✕

Connection Information for VPN Gateway
Account Information for the VPN Connection. **NCP**

Enter user ID and password for the VPN connection. If "save password" is not selected you will be prompted for the password before every connection.

VPN User ID

VPN Password VPN Password (confirm)

Save VPN Password

Configuration Guide

NCP Remote Access VPN Client for Juniper SRX



New Profile Wizard ✕

Connection Information for VPN Gateway
IKE ID Type and ID **NCP**

Enter the appropriate value for the IKE ID according to the selected ID type.

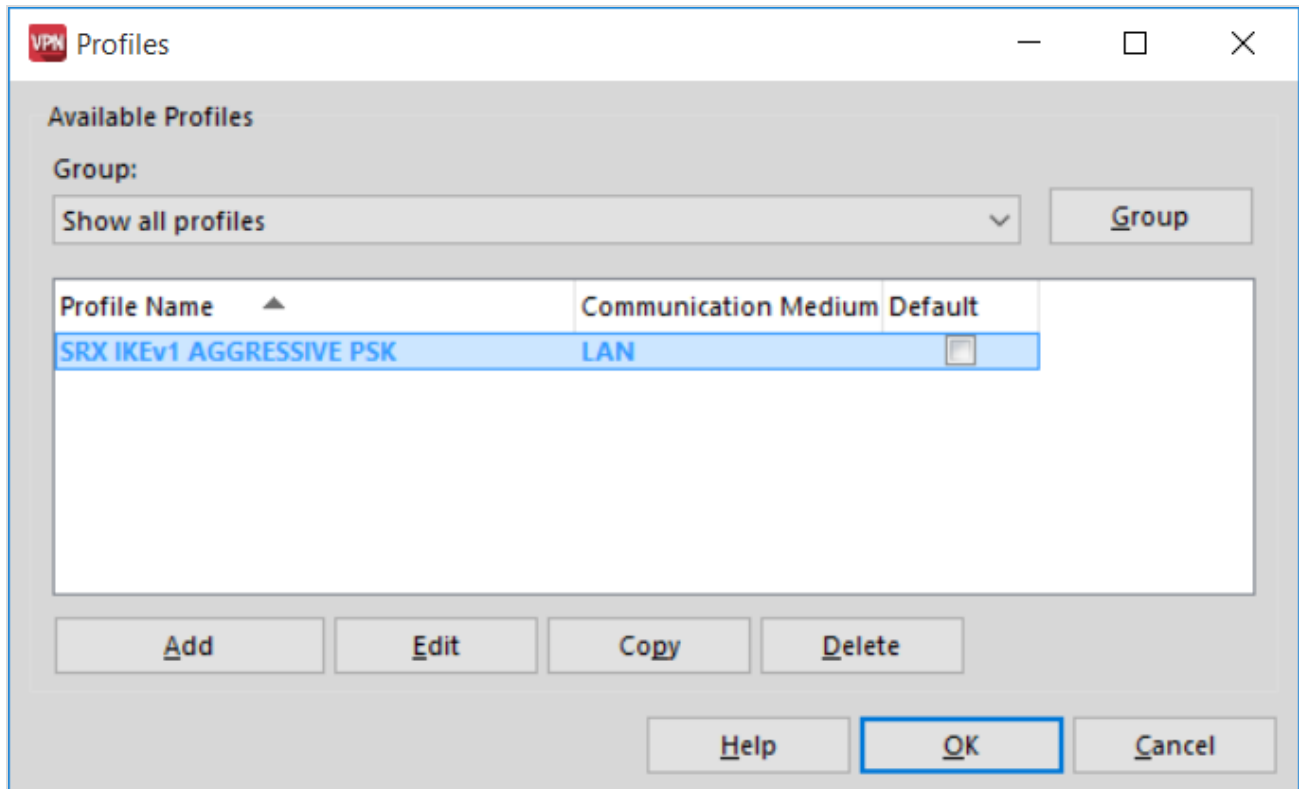
IKE ID Type:

IKE ID:

Configuration Guide

NCP Remote Access VPN Client for Juniper SRX

Edit the Profile



Configuration Guide

NCP Remote Access VPN Client for Juniper SRX

Change the protocol and enter the pre-shared key

Profile Settings SRX IKEv1 AGGRESSIVE PSK

Standard Configuration

- IPsec
- Split Tunneling
- VPN Bypass
- Connection

Extended Configuration

General

Profile Name: SRX IKEv1 AGGRESSIVE PSK

Default Profile after System Reboot

Internet Connection

Communication Medium: LAN (over IP)

VPN Connection

Tunnel Endpoint: 10.20.44.200

Protocol: Aggressive Mode (IKEv1)

Authentication: XAUTH

User Name: user2

Password:

Certificate configuration: none

Preshared Key:

VPN Path Finder

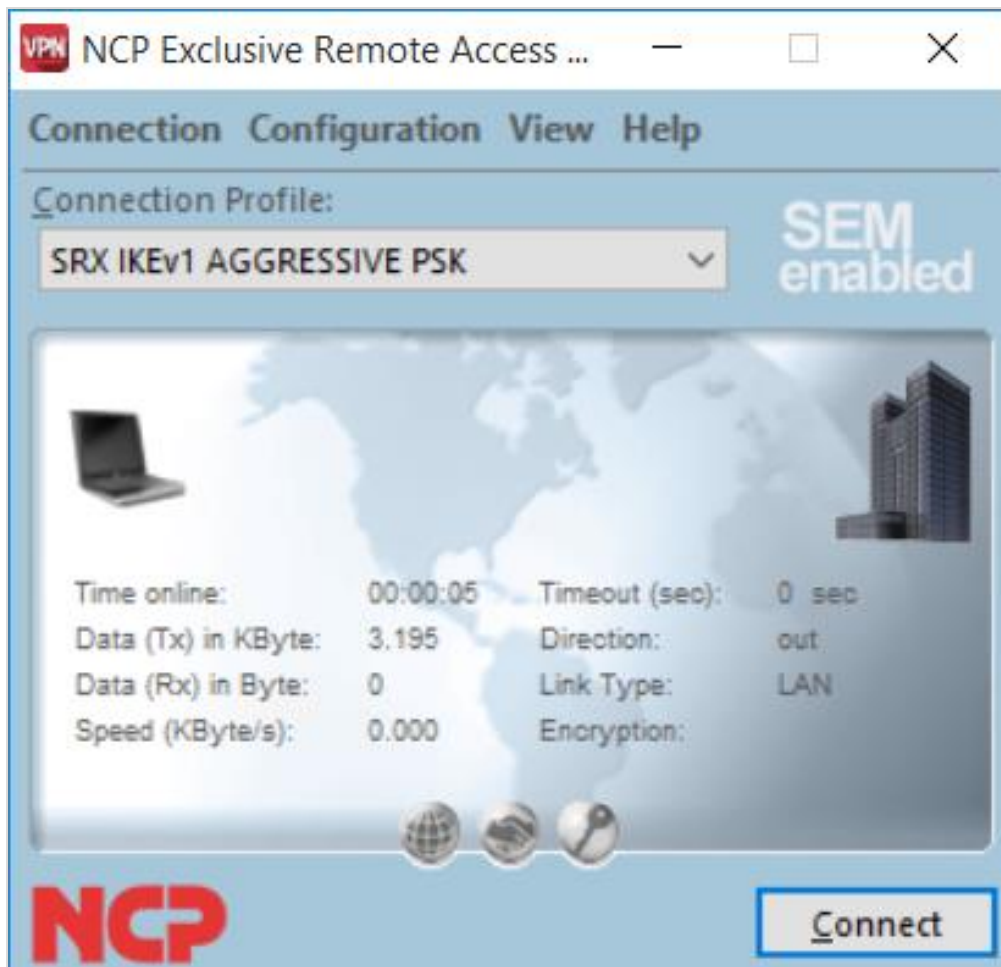
Standard...

Help OK Cancel

Configuration Guide

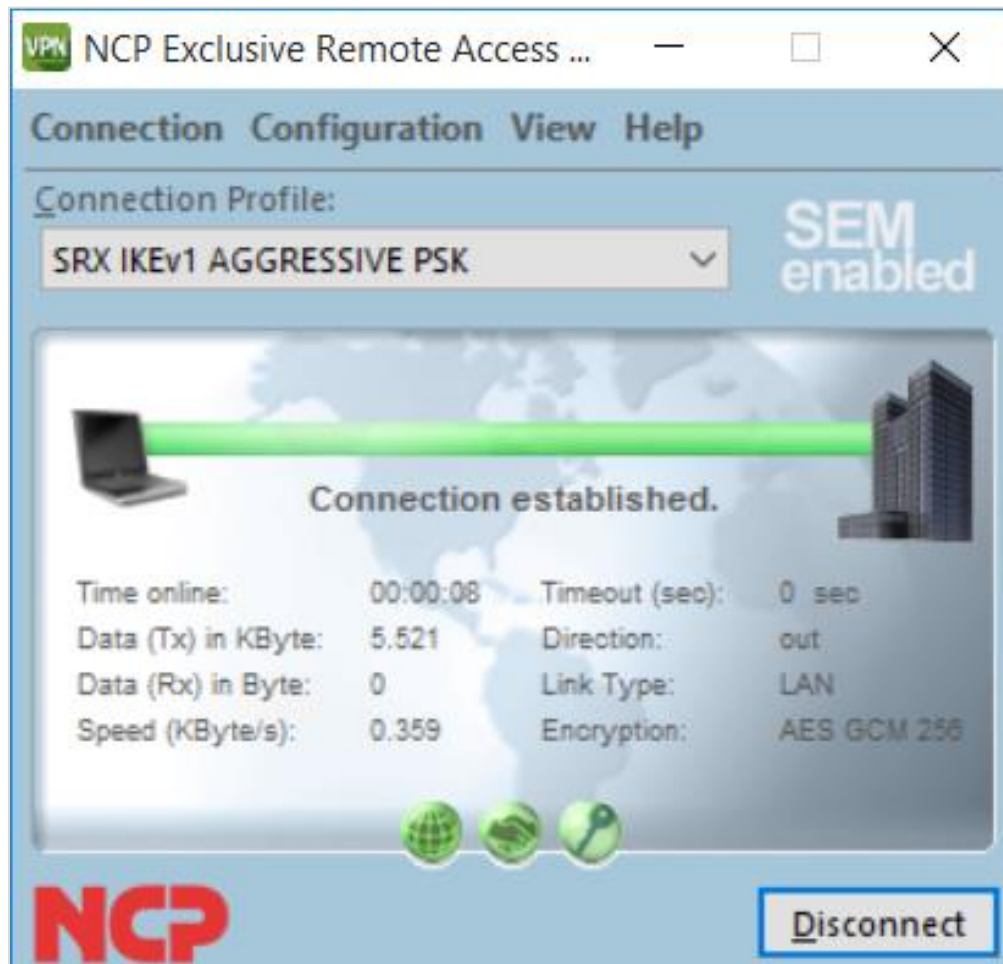
NCP Remote Access VPN Client for Juniper SRX

Establish the VPN connection



Configuration Guide

NCP Remote Access VPN Client for Juniper SRX



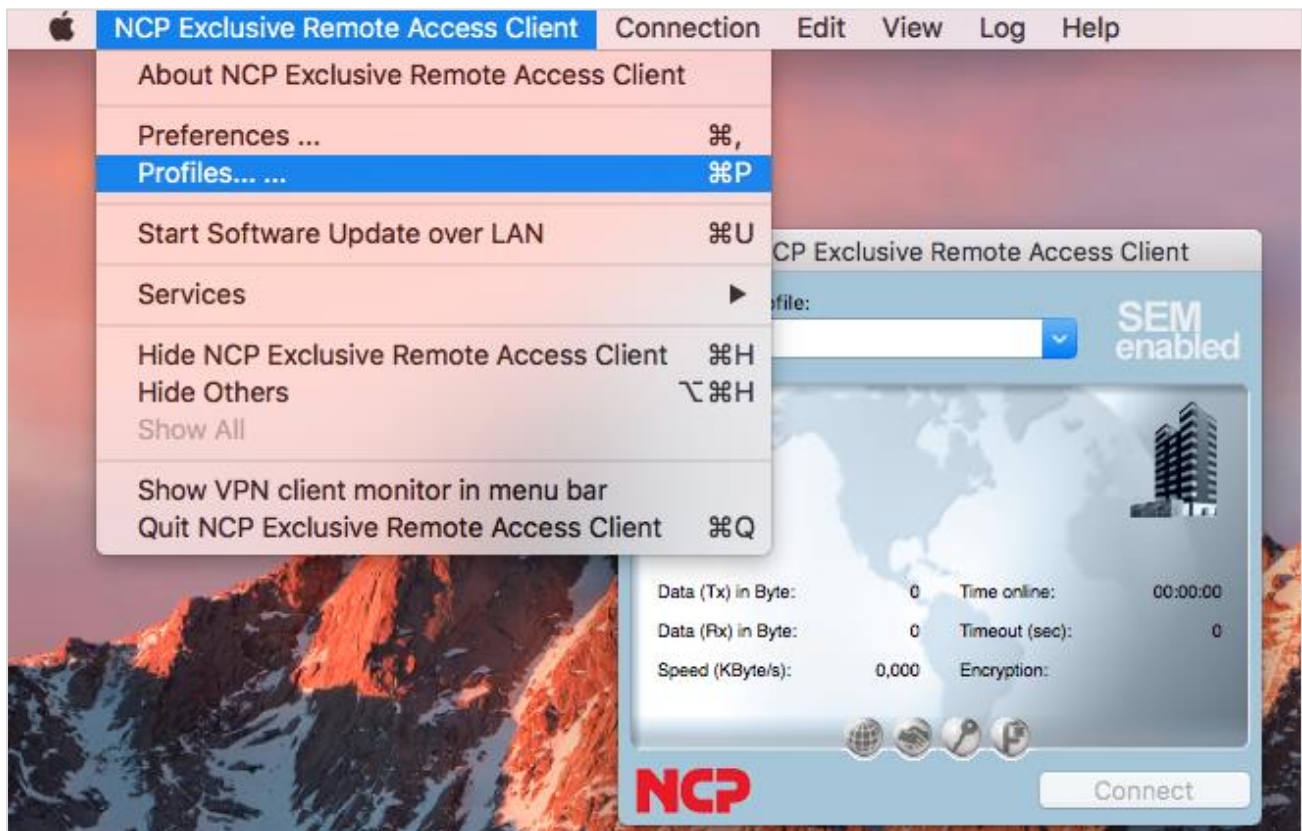
Configuration Guide

NCP Remote Access VPN Client for Juniper SRX



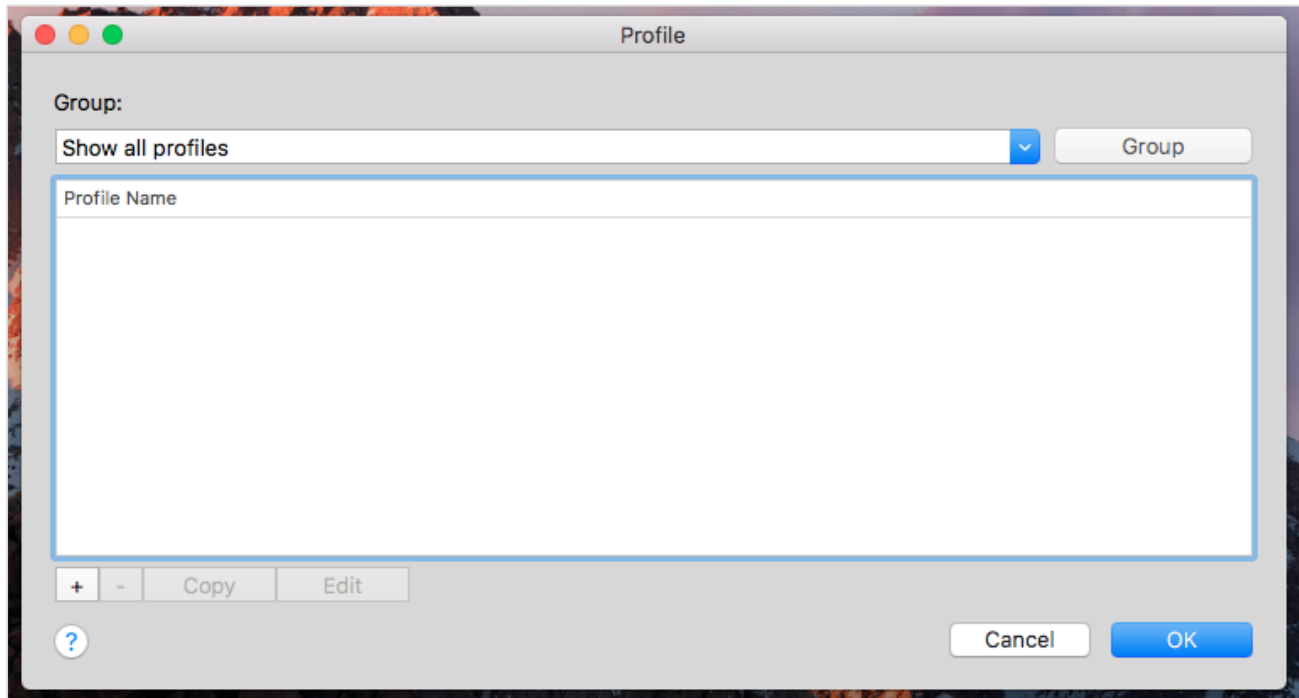
Configure NCP Exclusive Remote Access Client for macOS

Create new Connection Profile (NCP Exclusive Remote Access Client – Profiles...)



Configuration Guide

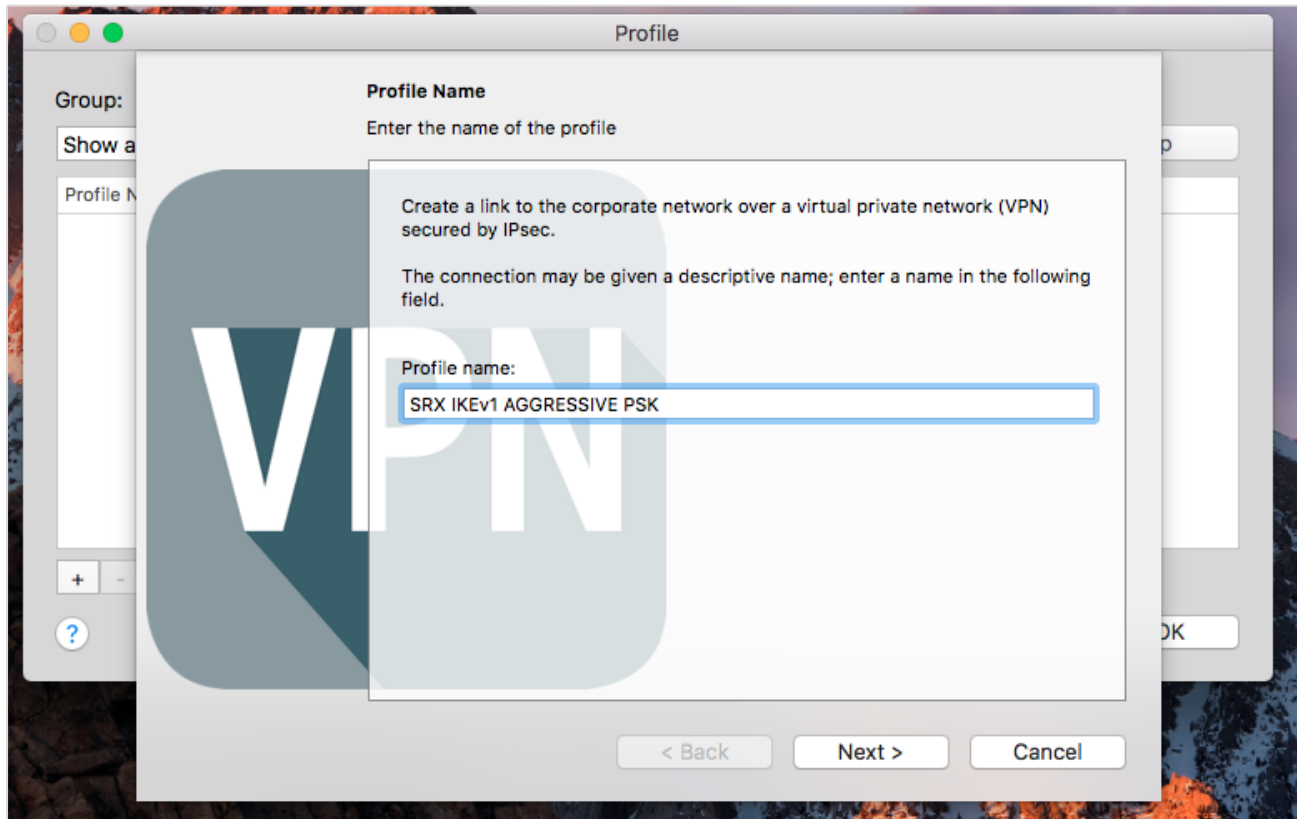
NCP Remote Access VPN Client for Juniper SRX



Click on “+” to create a new Connection Profile

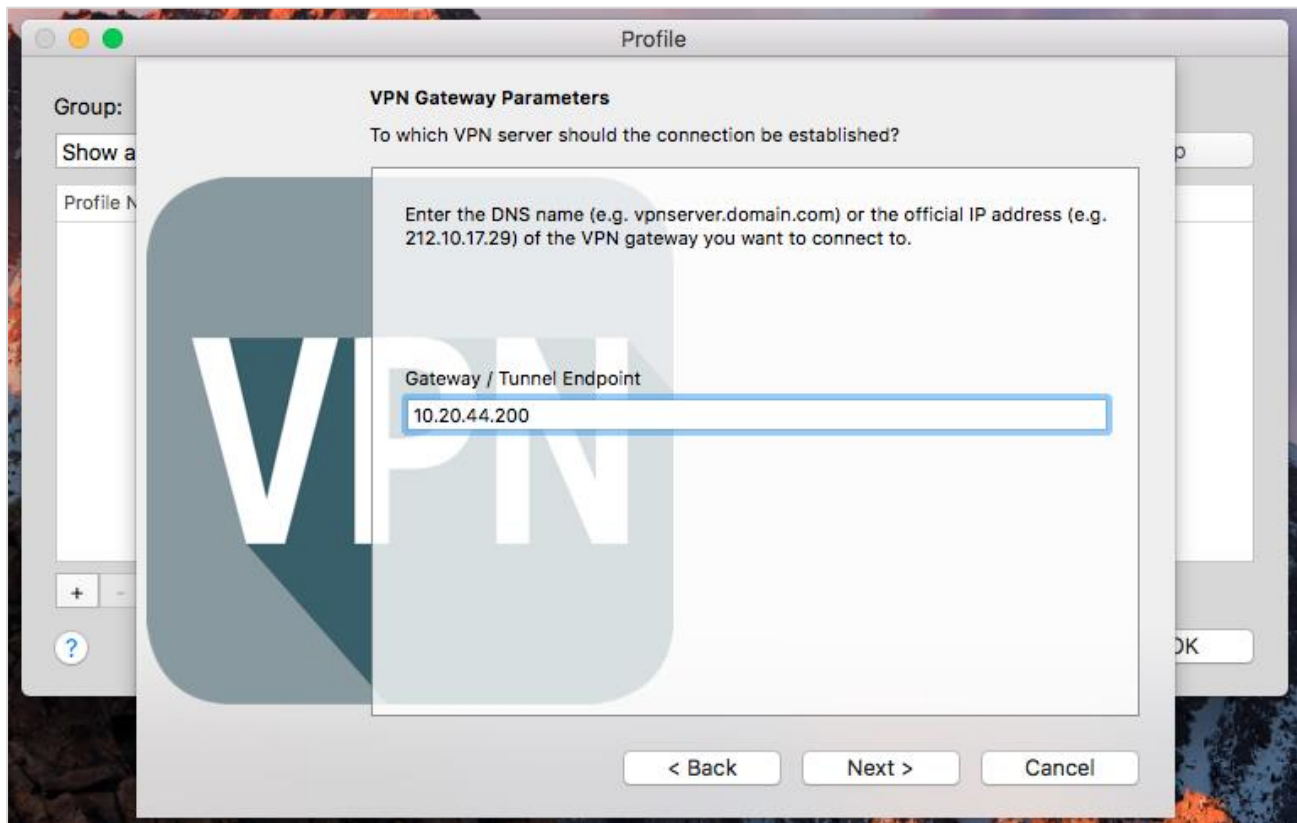
Configuration Guide

NCP Remote Access VPN Client for Juniper SRX



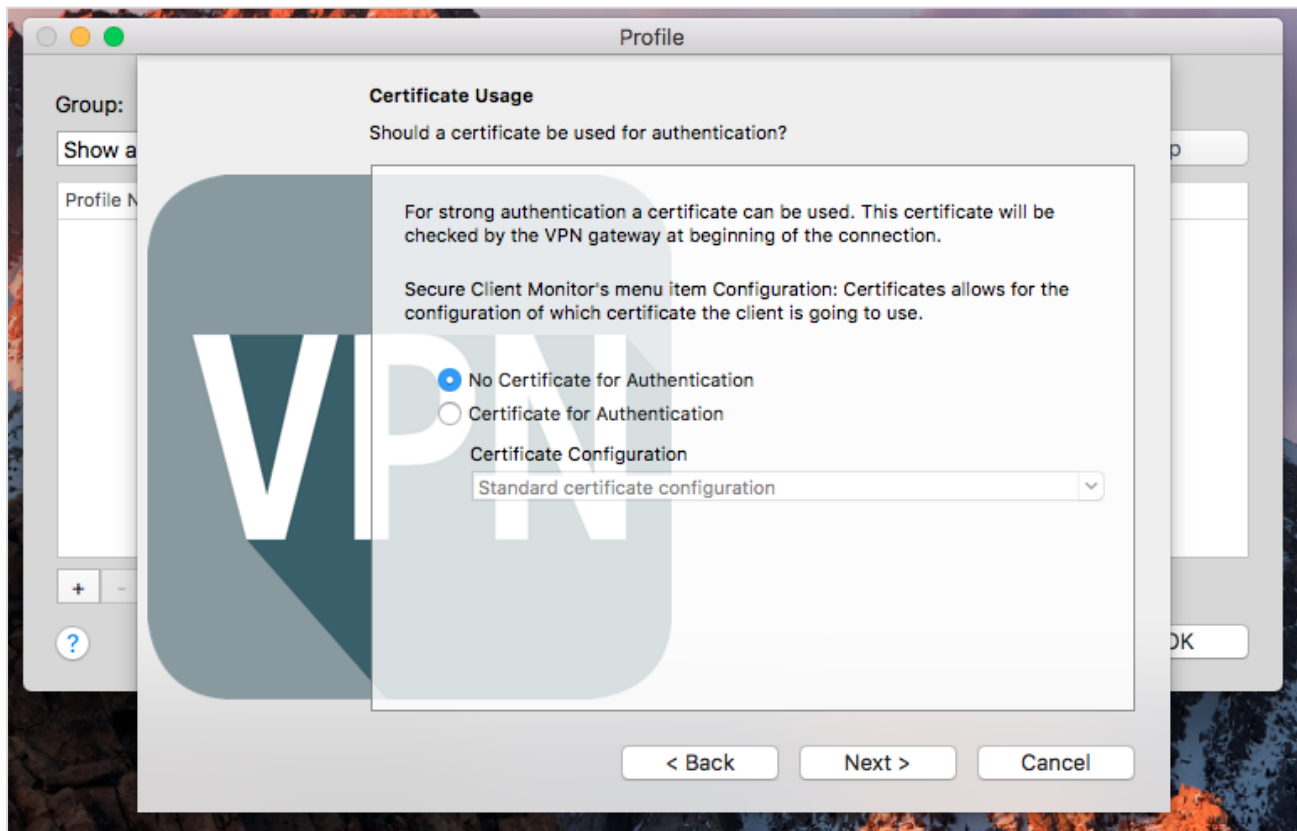
Configuration Guide

NCP Remote Access VPN Client for Juniper SRX



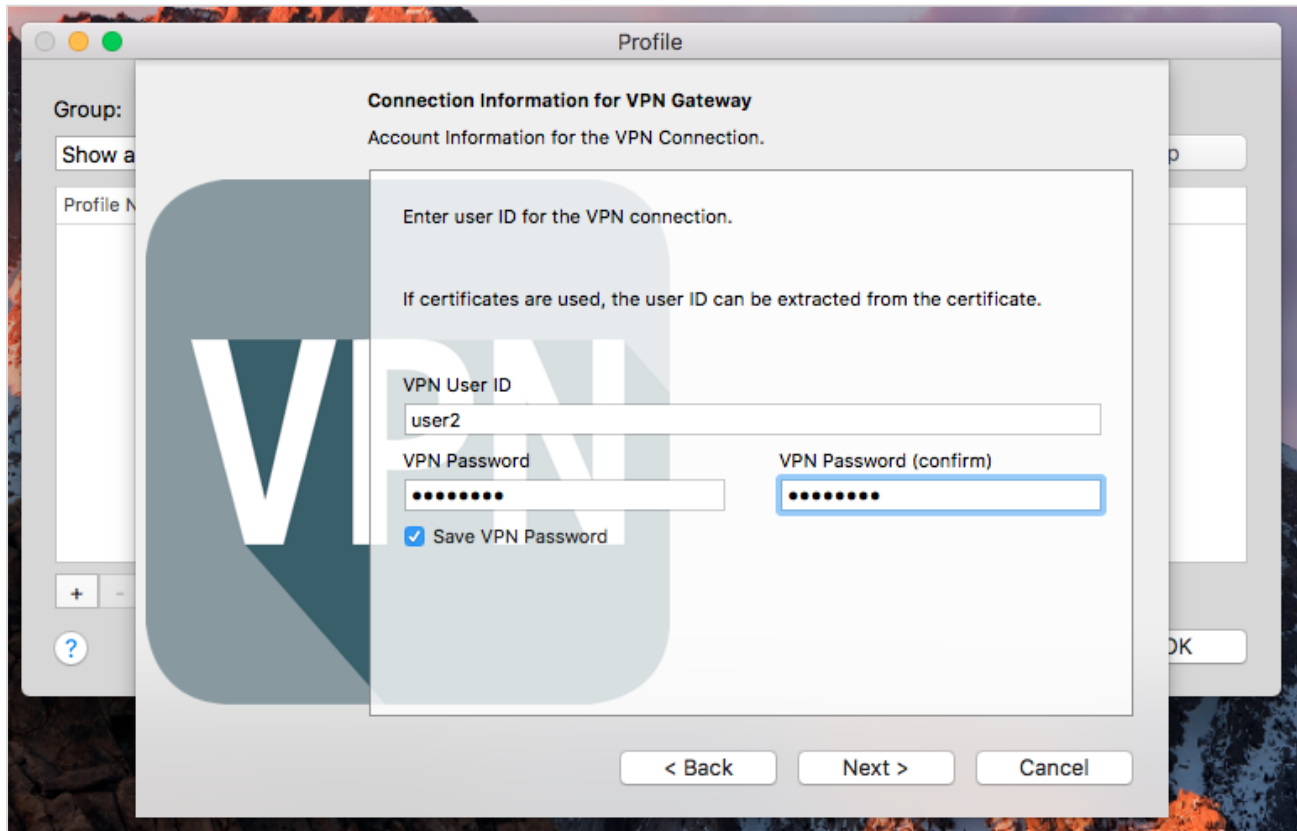
Configuration Guide

NCP Remote Access VPN Client for Juniper SRX



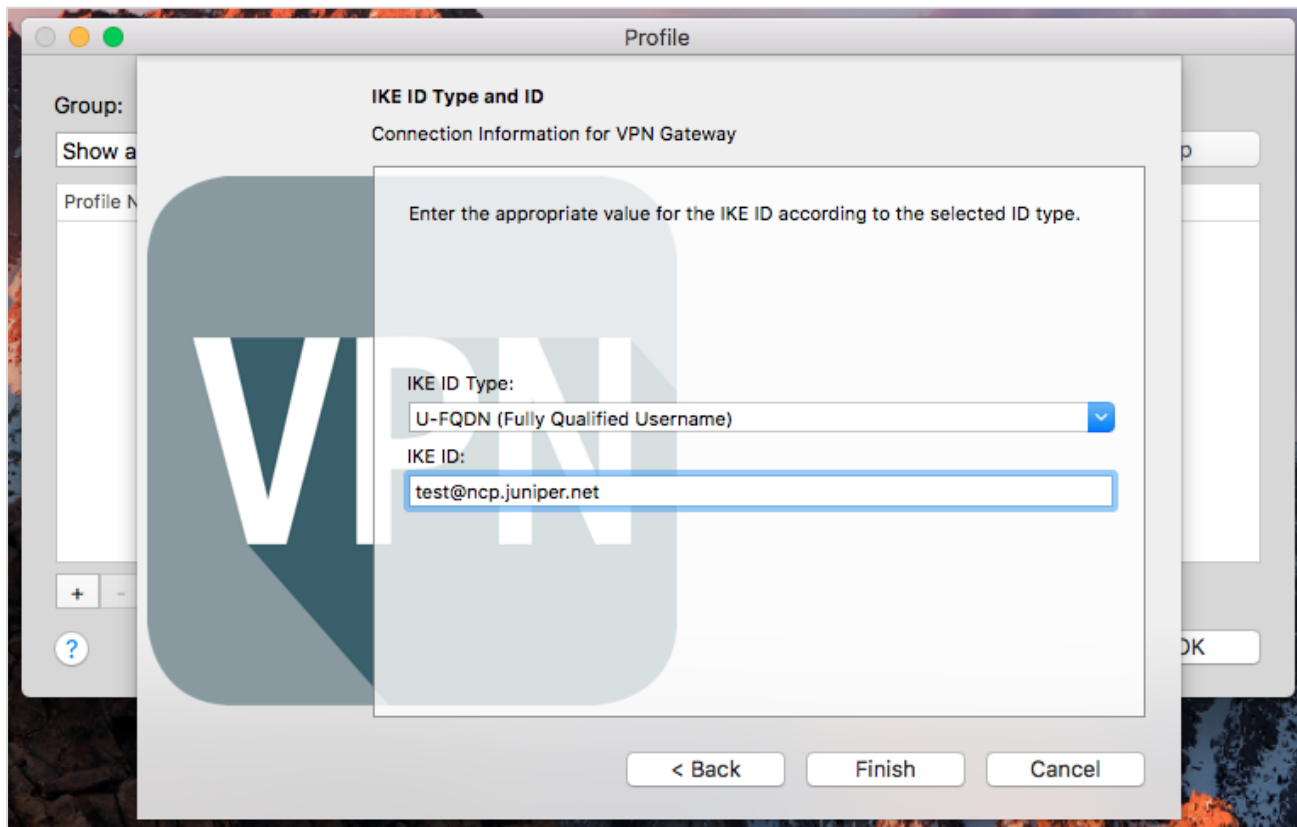
Configuration Guide

NCP Remote Access VPN Client for Juniper SRX



Configuration Guide

NCP Remote Access VPN Client for Juniper SRX

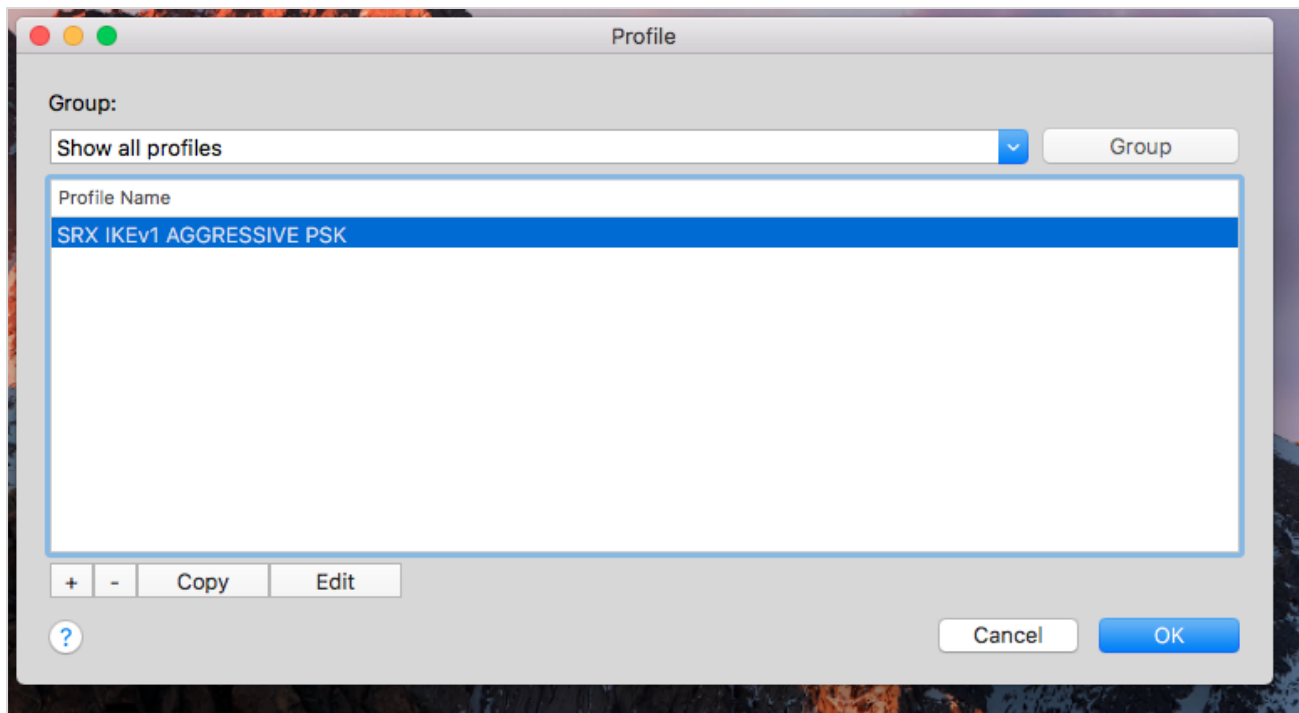


Configuration Guide

NCP Remote Access VPN Client for Juniper SRX



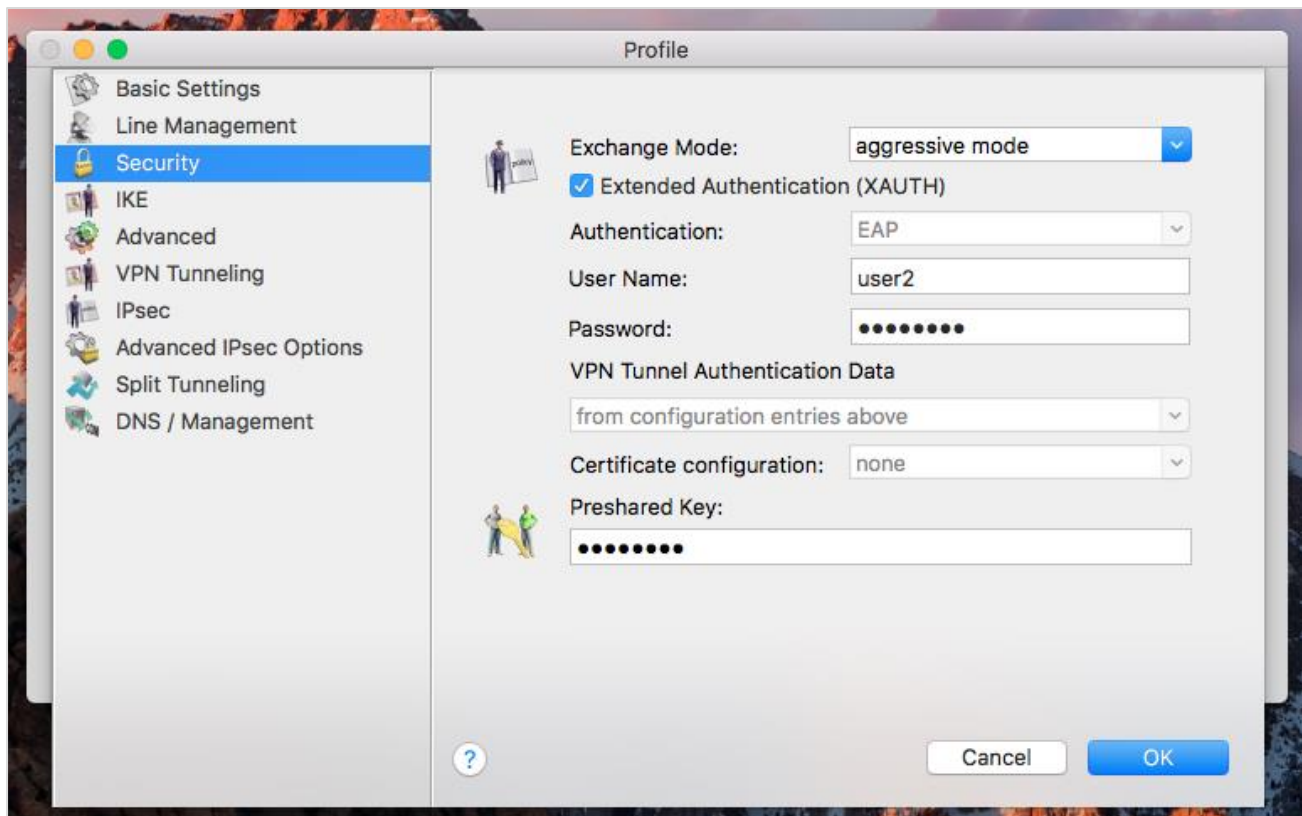
Edit the Profile



Configuration Guide

NCP Remote Access VPN Client for Juniper SRX

Change the protocol and enter the pre-shared key



Configuration Guide

NCP Remote Access VPN Client for Juniper SRX

Establish the VPN connection



Configuration Guide

NCP Remote Access VPN Client for Juniper SRX



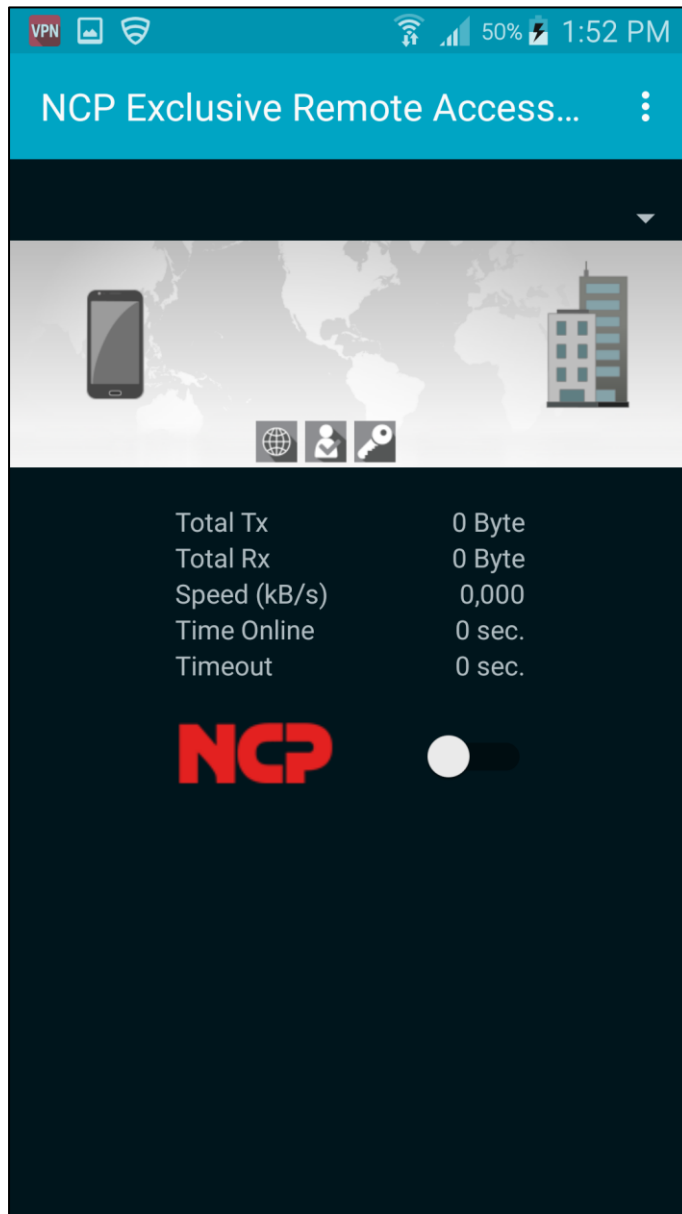
Configuration Guide

NCP Remote Access VPN Client for Juniper SRX



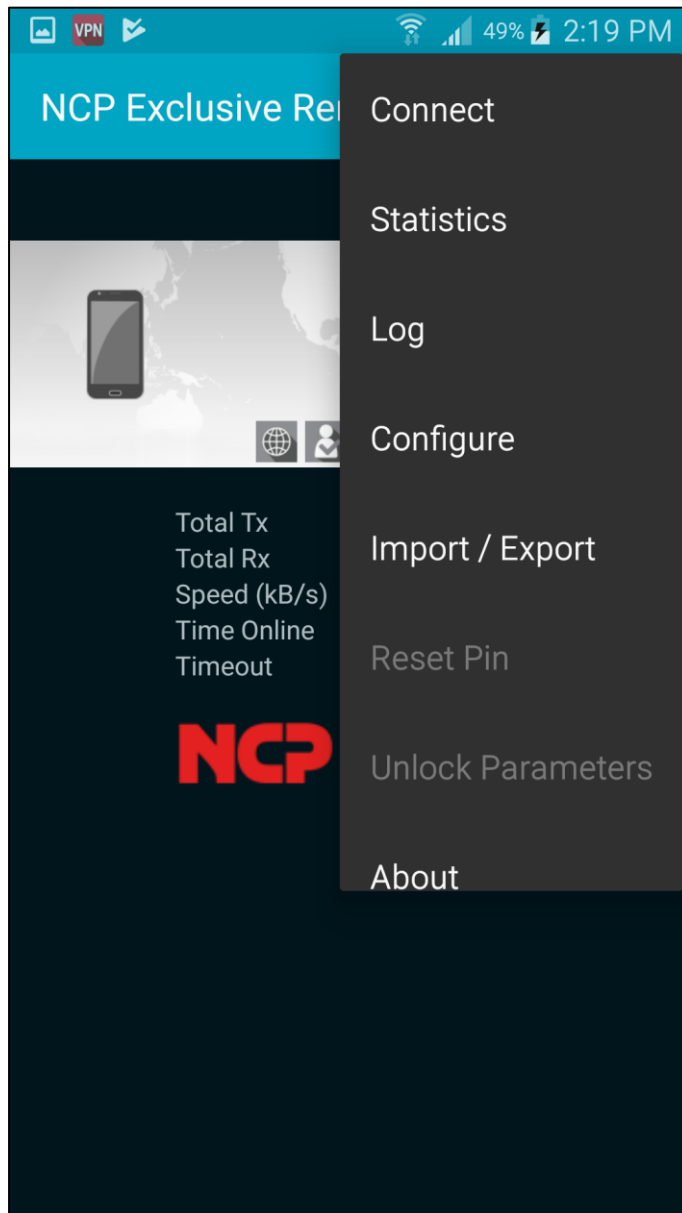
Configure NCP Exclusive Remote Access Client for Android

Create new Connection Profile (Menue – Configure – Profile configuration – Add Profile)



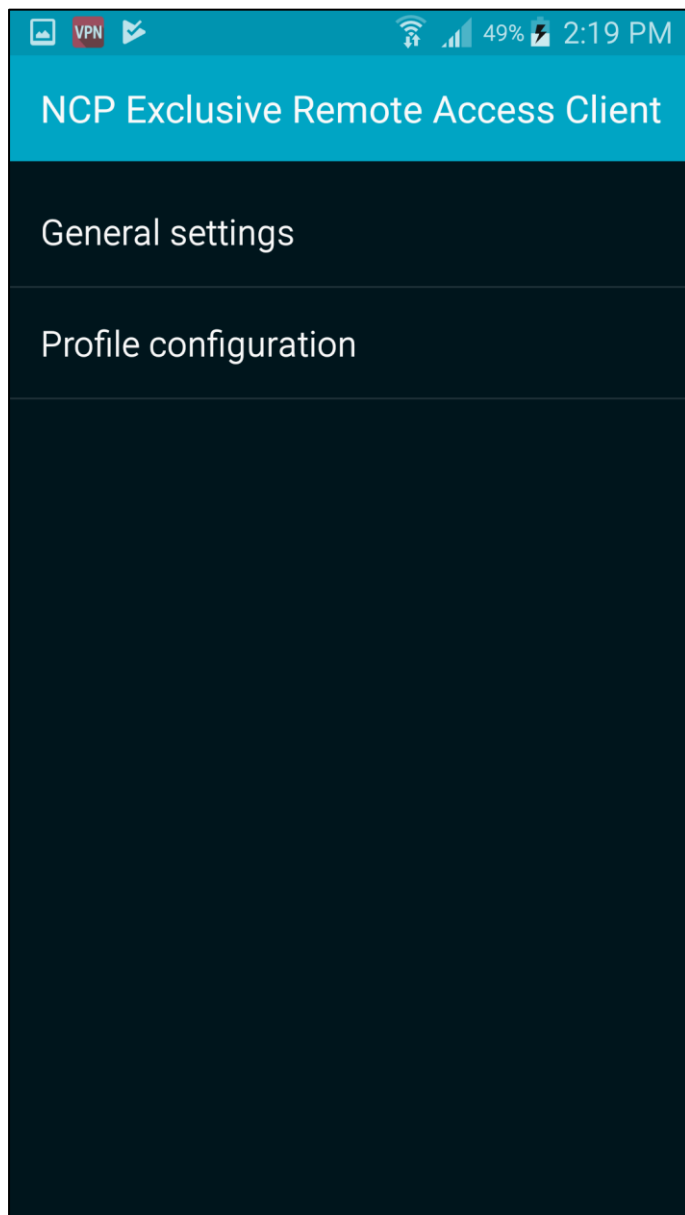
Configuration Guide

NCP Remote Access VPN Client for Juniper SRX



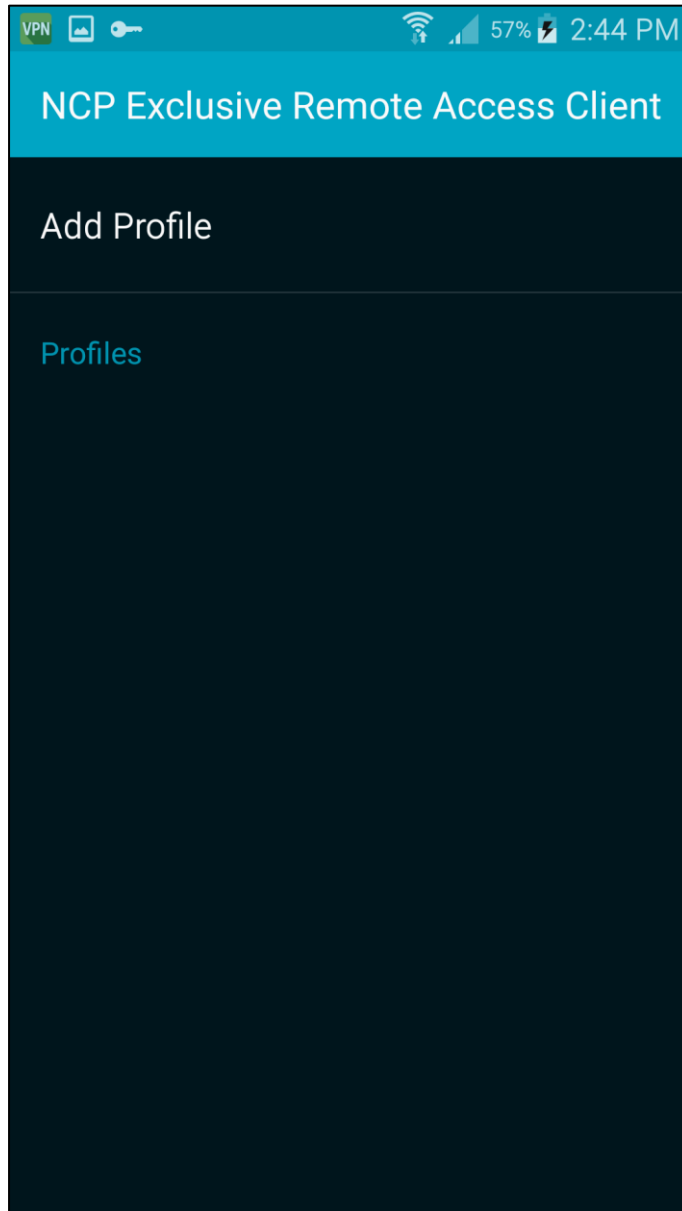
Configuration Guide

NCP Remote Access VPN Client for Juniper SRX



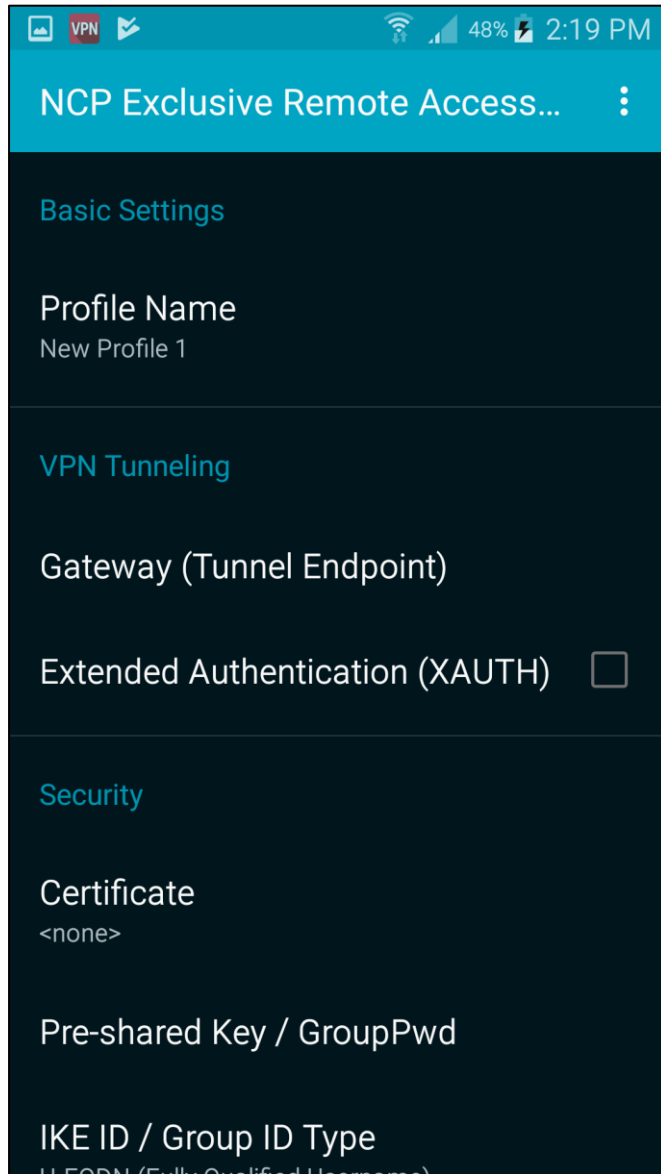
Configuration Guide

NCP Remote Access VPN Client for Juniper SRX



Configuration Guide

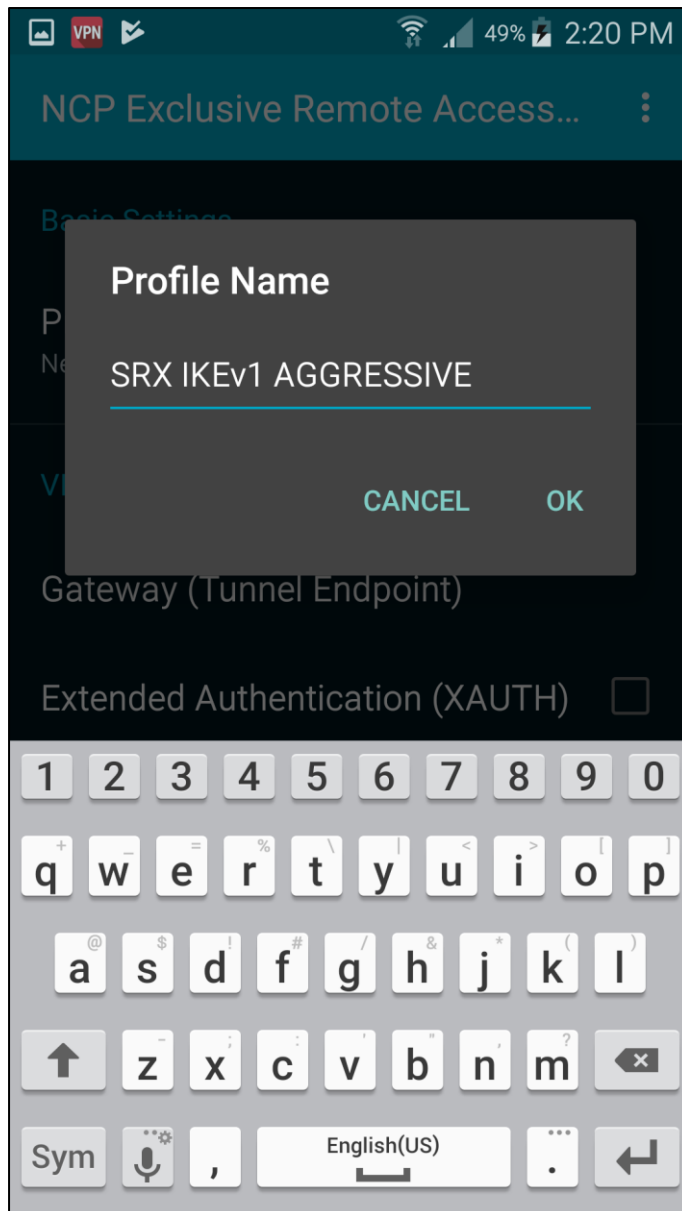
NCP Remote Access VPN Client for Juniper SRX



Configuration Guide

NCP Remote Access VPN Client for Juniper SRX

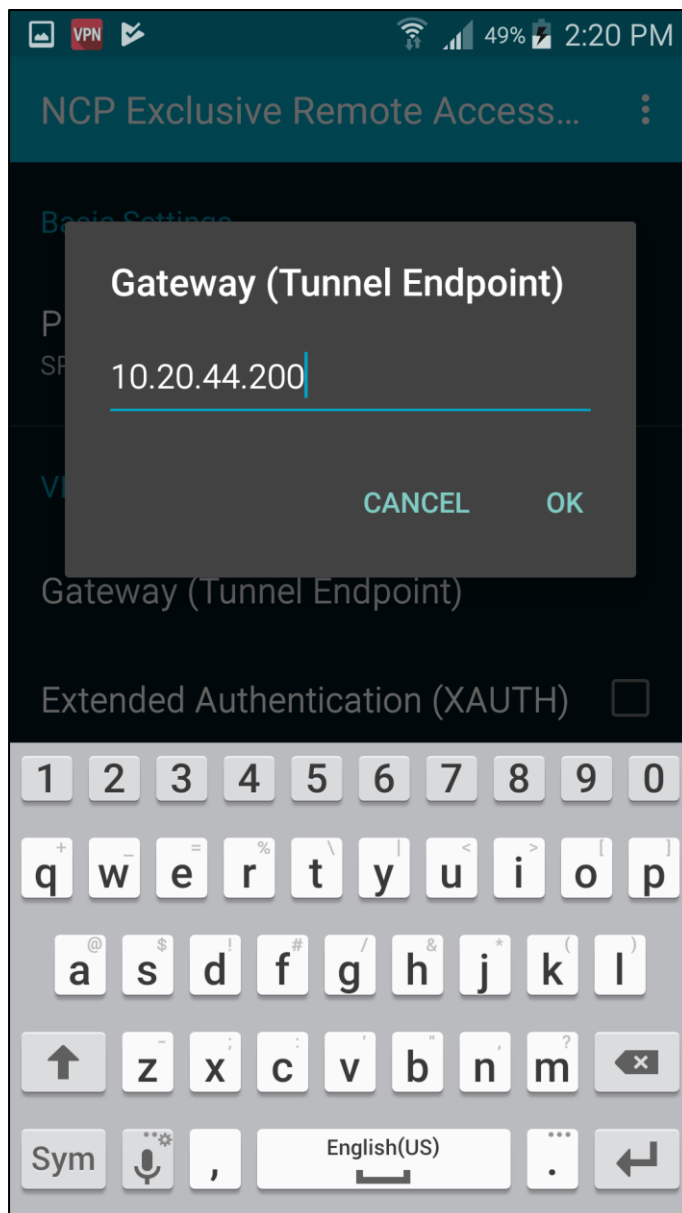
Enter name for connection profile



Configuration Guide

NCP Remote Access VPN Client for Juniper SRX

Enter name or IP address of Juniper SRX

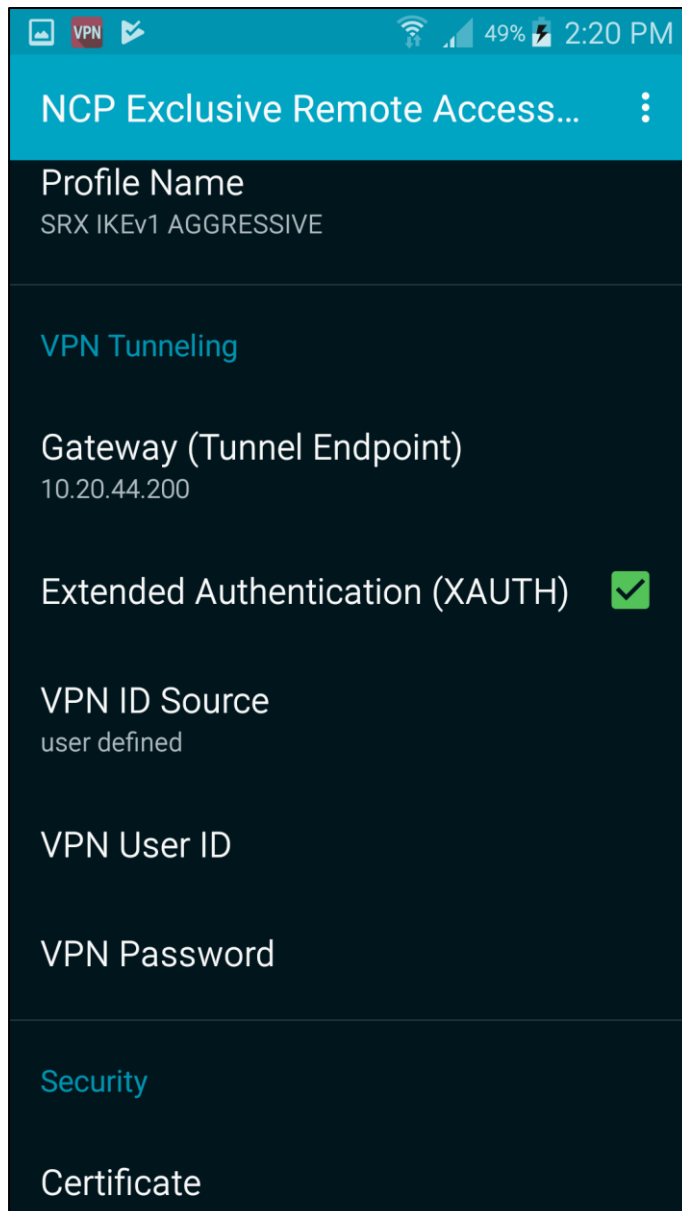


Configuration Guide

NCP Remote Access VPN Client for Juniper SRX

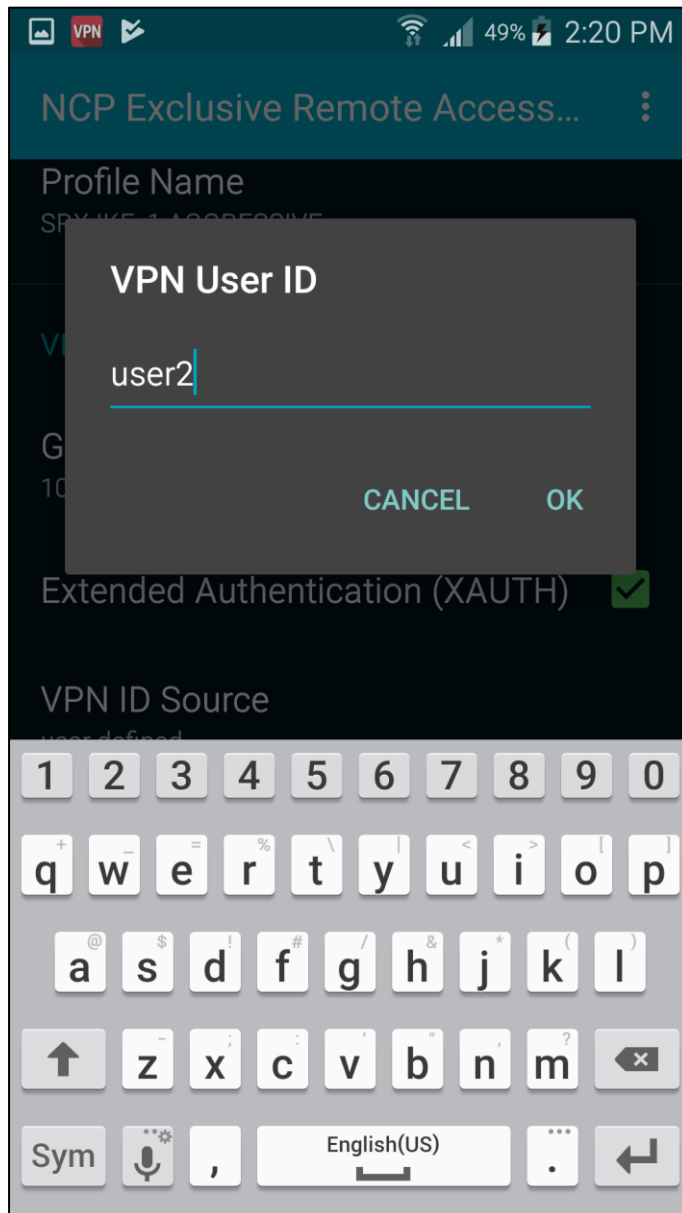


Enable Extended Authentication (XAUTH) and enter username and password



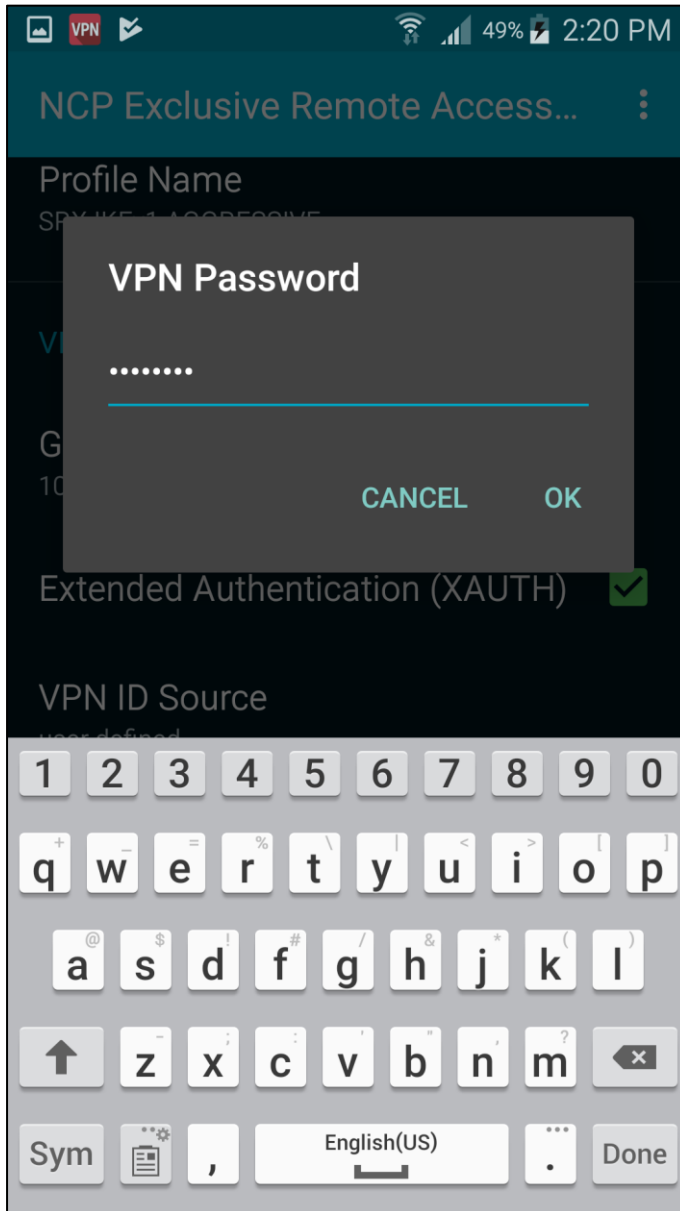
Configuration Guide

NCP Remote Access VPN Client for Juniper SRX



Configuration Guide

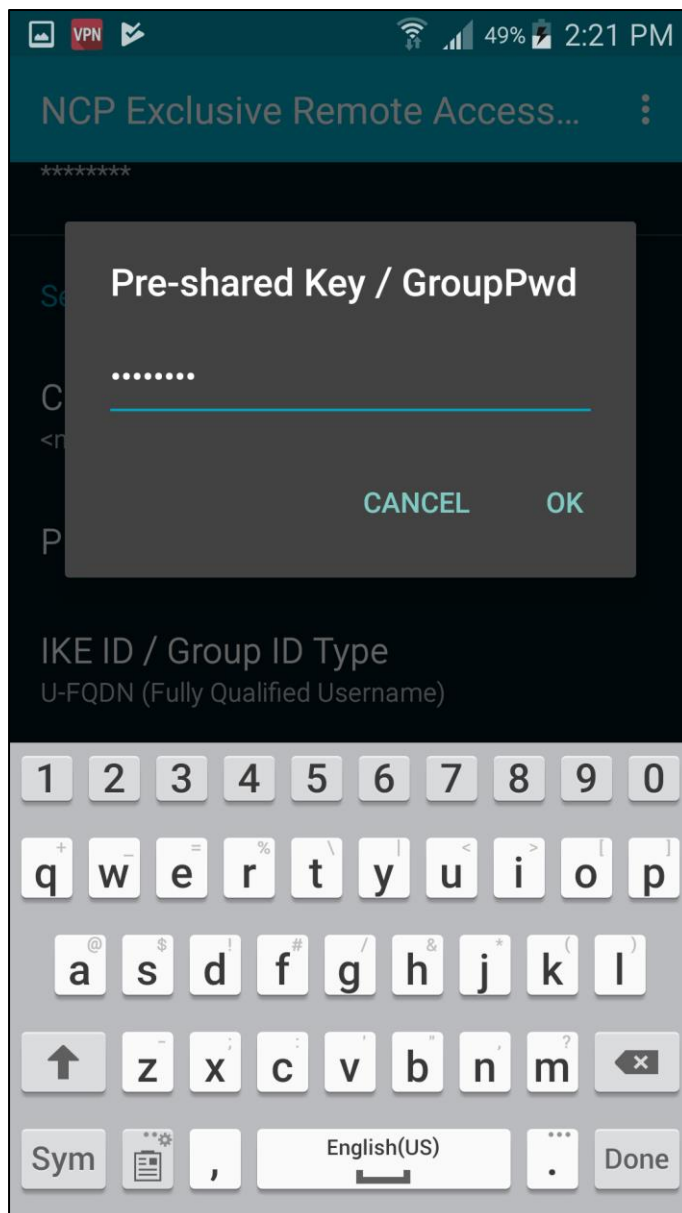
NCP Remote Access VPN Client for Juniper SRX



Configuration Guide

NCP Remote Access VPN Client for Juniper SRX

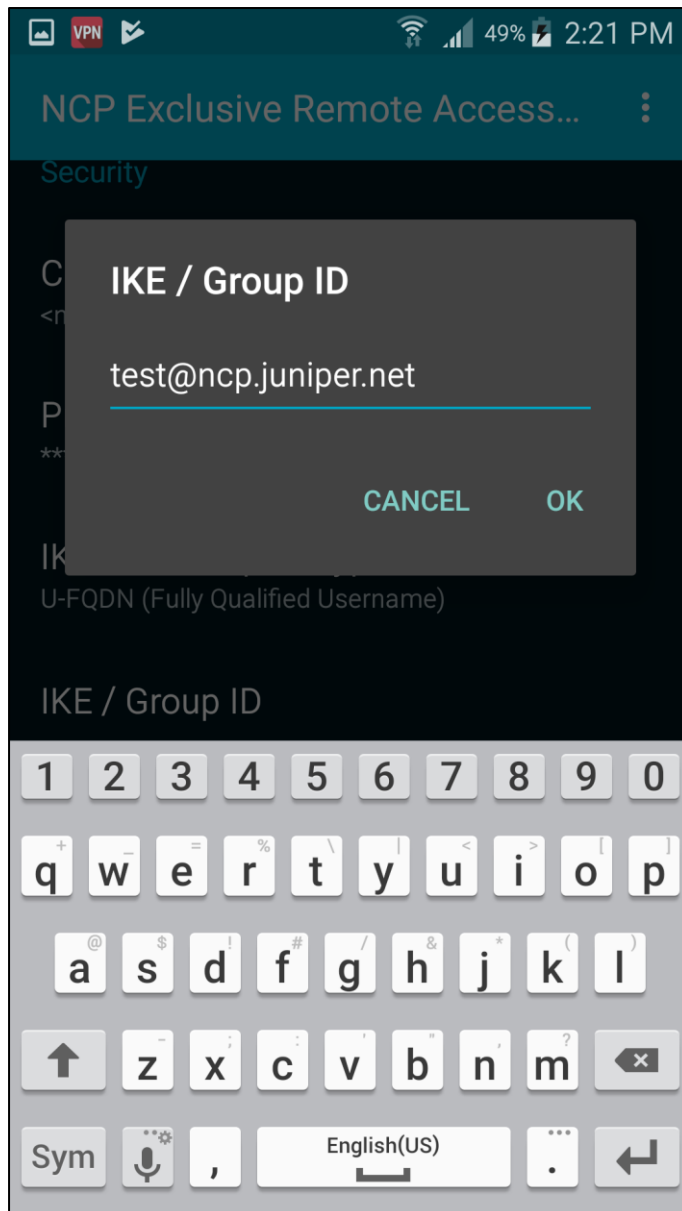
Enter the pre-shared key



Configuration Guide

NCP Remote Access VPN Client for Juniper SRX

Enter IKE-ID

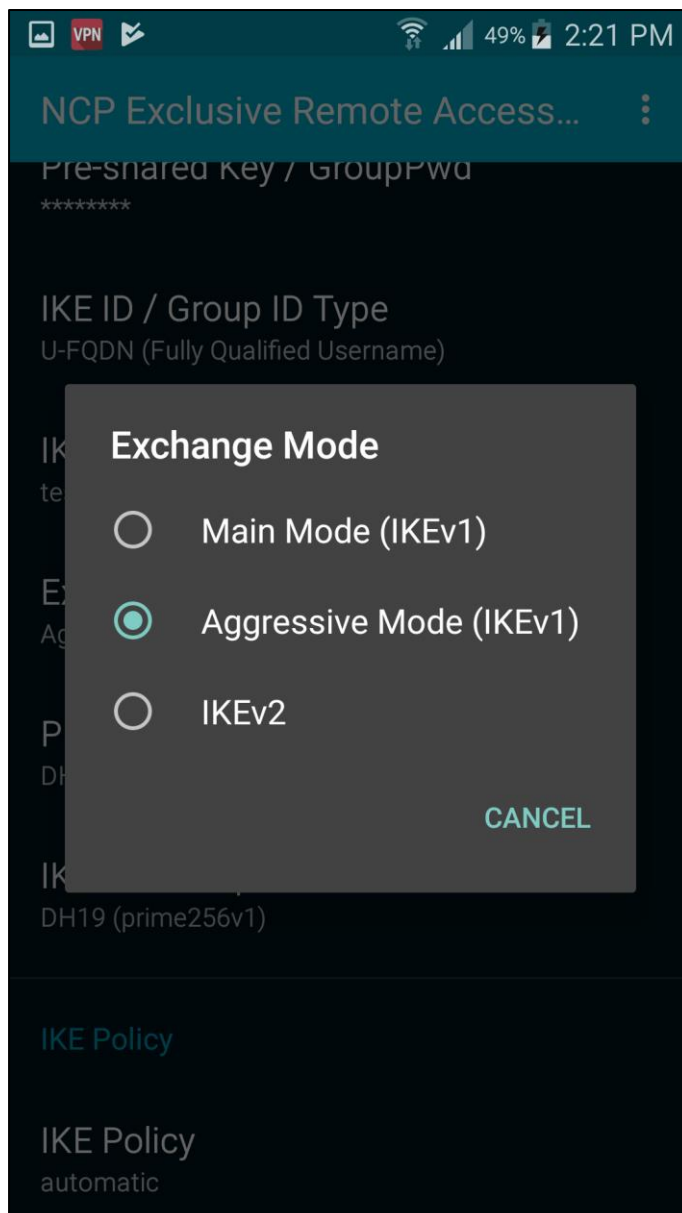


Configuration Guide

NCP Remote Access VPN Client for Juniper SRX



Choose the Exchange mode (Aggressive Mode (IKEv1))

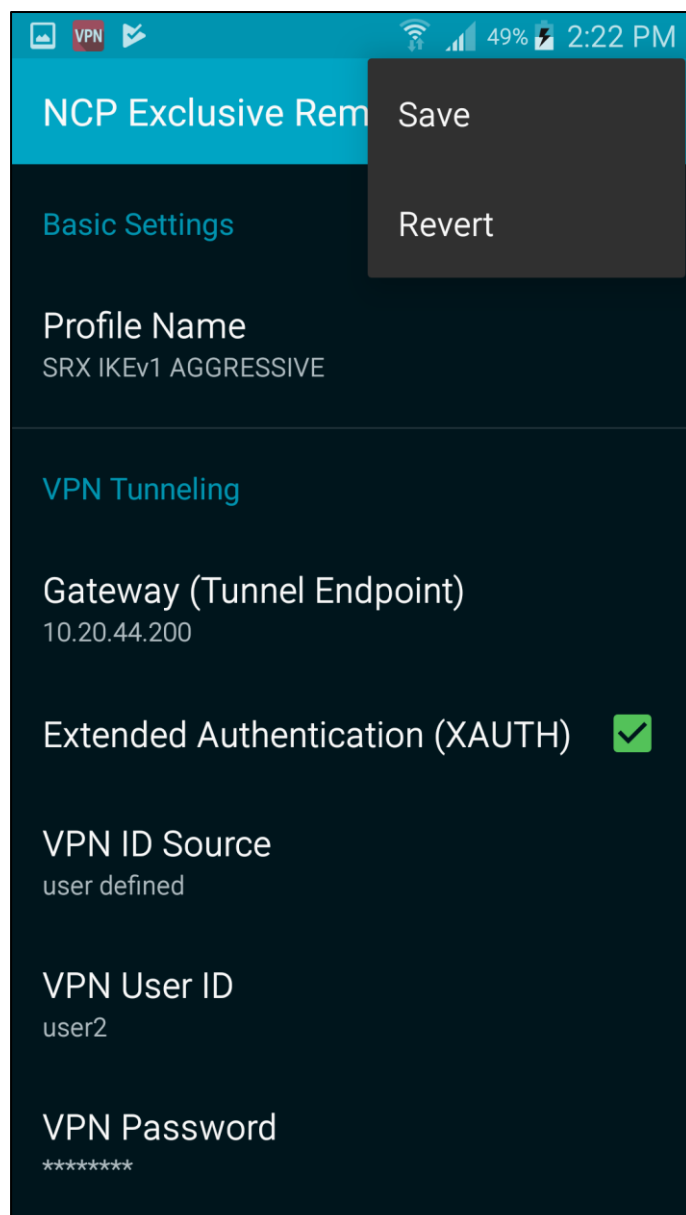


Configuration Guide

NCP Remote Access VPN Client for Juniper SRX



Save the profile by clicking on “Save” or the back button on the device



The configuration can also be imported via the app

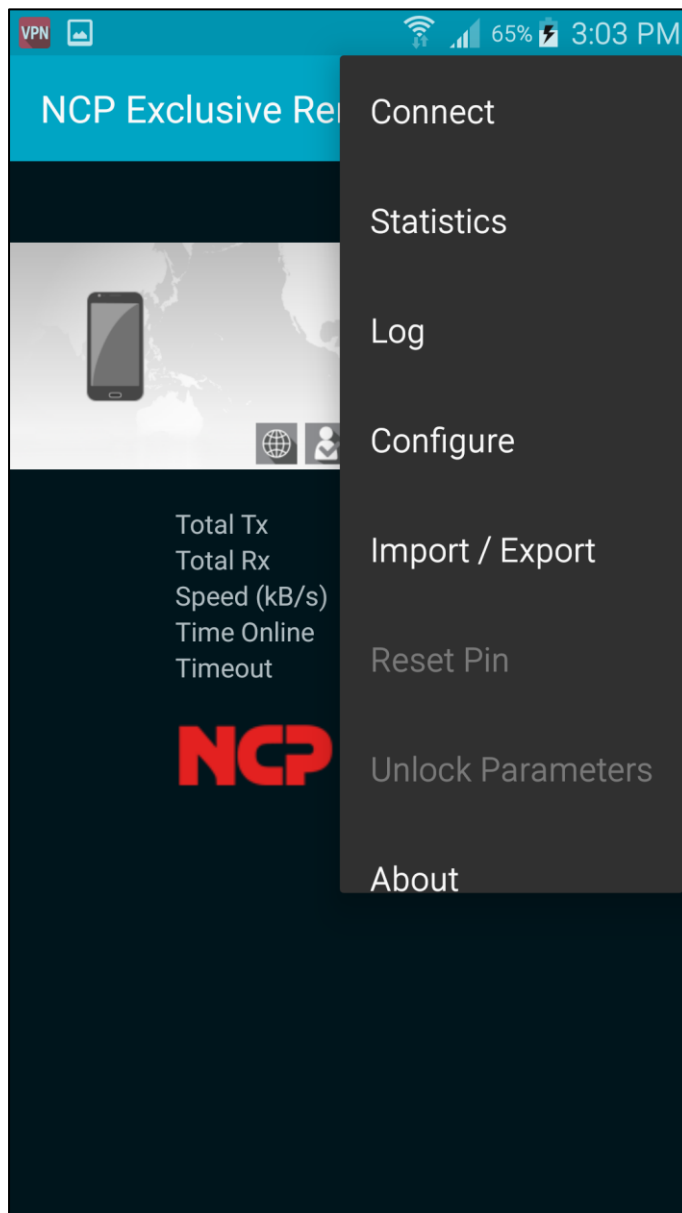
Configuration Guide

NCP Remote Access VPN Client for Juniper SRX



Copy the configuration ncpphone.cfg or ncpphone.cnf into the folder Device storage/NCP/Import

Open the menu and choose “Import/Export”

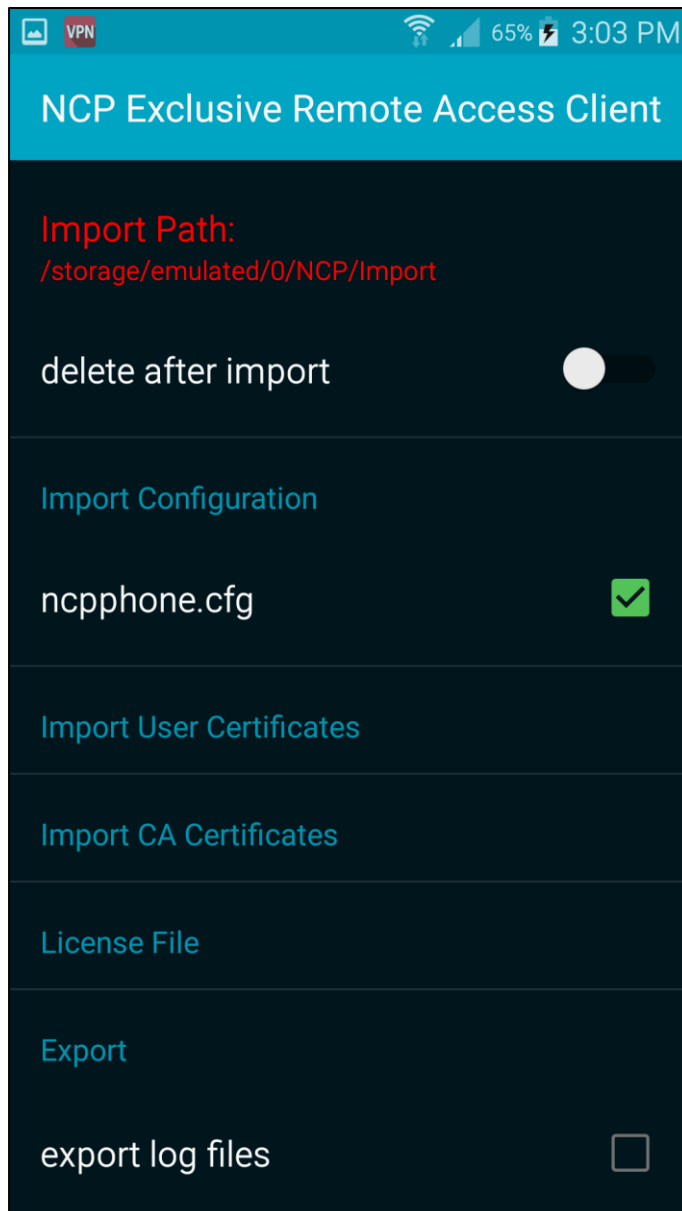


Configuration Guide

NCP Remote Access VPN Client for Juniper SRX



Enable ncpphone.cfg and press the back/return button on your device



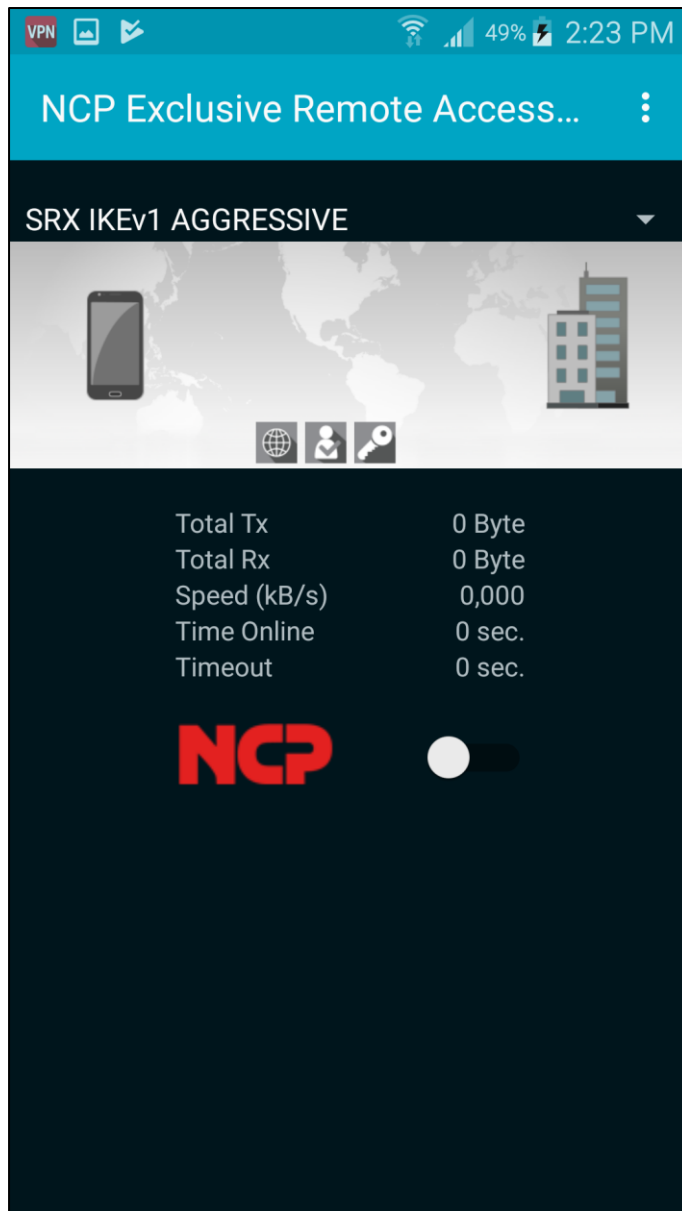
The configuration will be imported

Configuration Guide

NCP Remote Access VPN Client for Juniper SRX



Click on the slide button to establish a connection

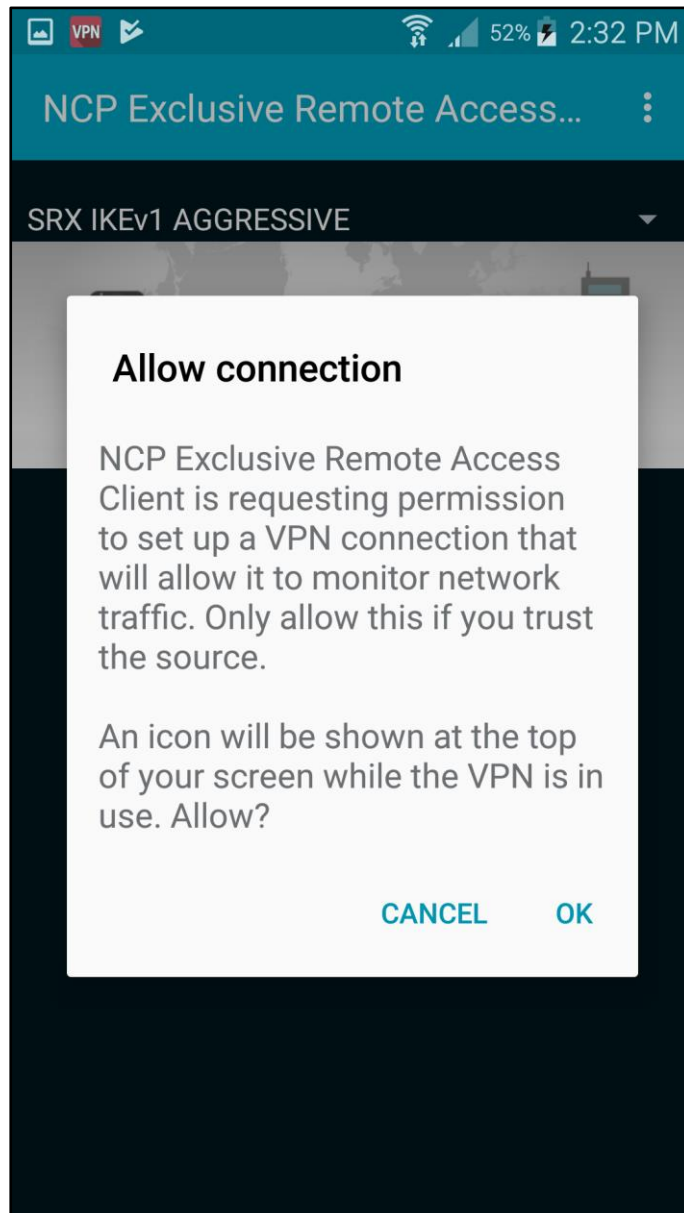


Configuration Guide

NCP Remote Access VPN Client for Juniper SRX



If the establish the connection the first time, Android will ask you to allow the VPN client to establish a connection. Click on “OK”

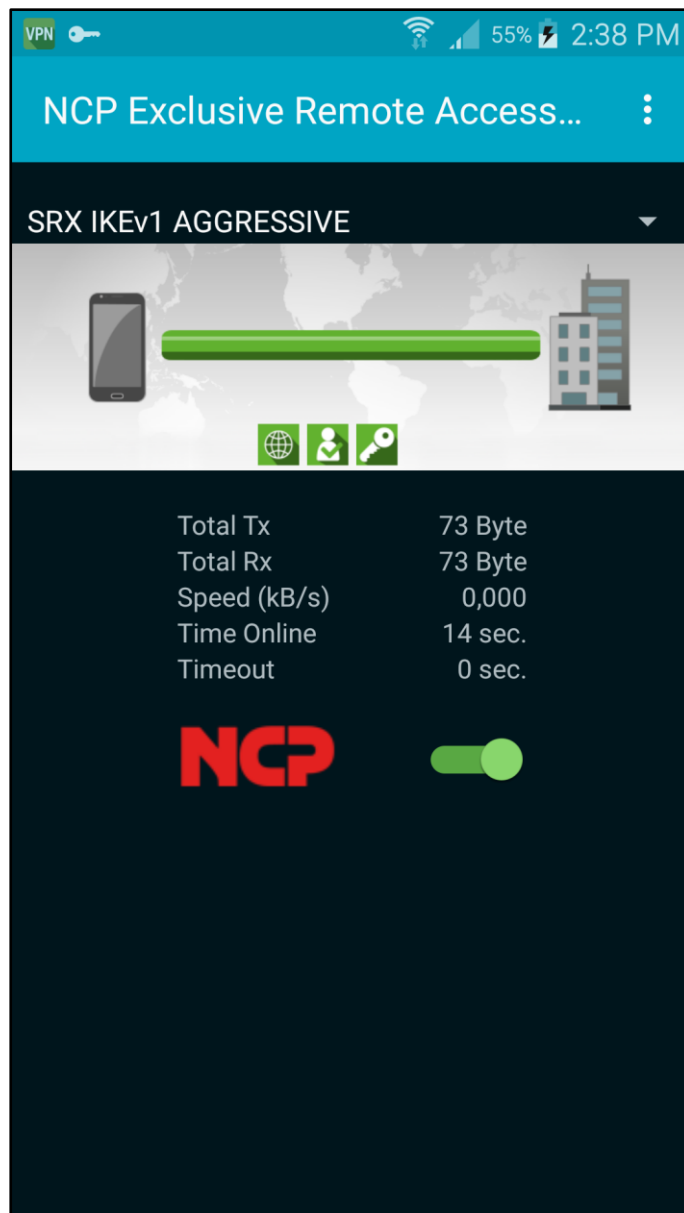


Configuration Guide

NCP Remote Access VPN Client for Juniper SRX



VPN connection is established



Configuration Guide

NCP Remote Access VPN Client for Juniper SRX



Configure NCP Exclusive Remote Access Client for iOS

The configuration of the iOS client is done on the NCP Secure Enterprise Management Server.

After you create a configuration on the NCP Secure Enterprise Management Server, you are able to export the configuration file `ncpphone.ncpconfigsem`. The file ending needs to be `.ncpconfigsem`

There are 2 ways to import the profile

1) Import by sending it over email or downloading it from a webserver

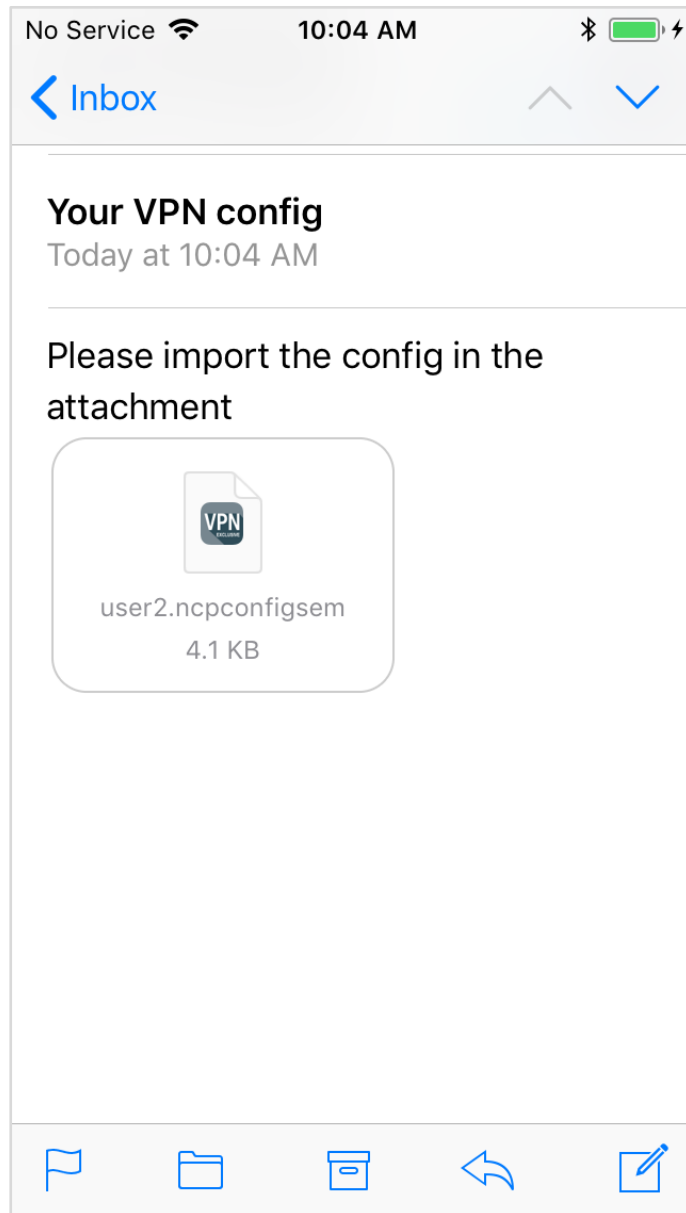
This sample will show the import if the file is sent via email

Send the `.ncpconfigsem` file via email to your iOS device

Open the email with the attachment

Configuration Guide

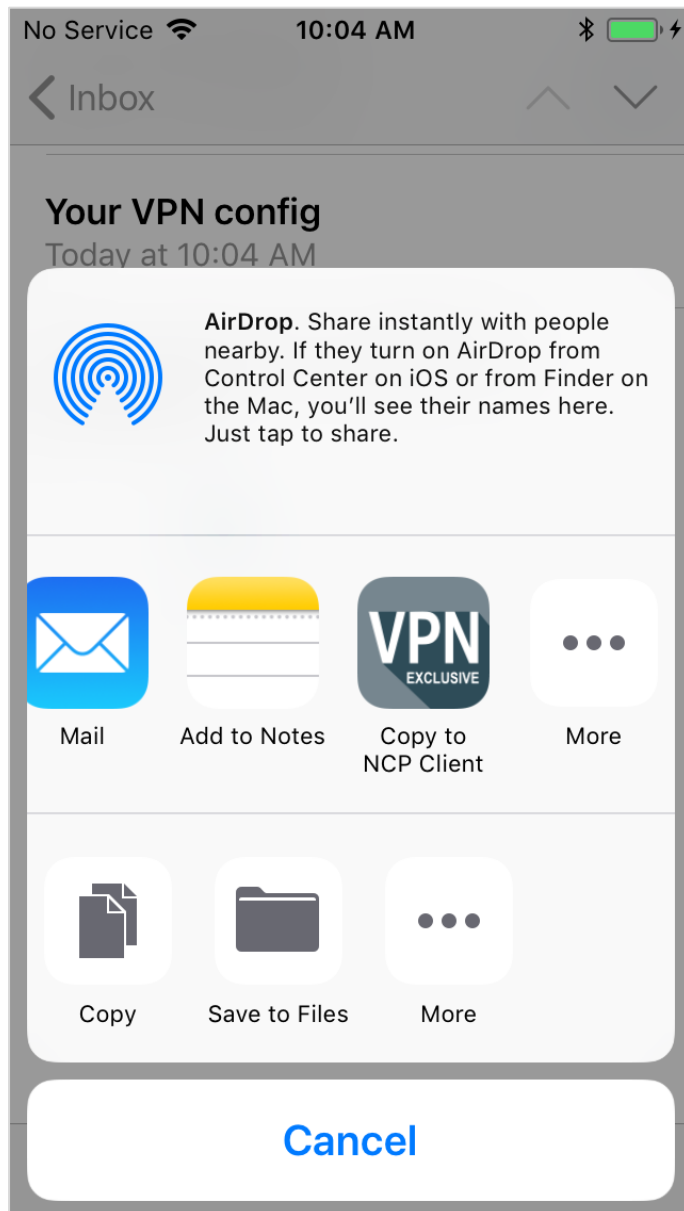
NCP Remote Access VPN Client for Juniper SRX



Click on the .ncpconfigsem file and choose “Copy to NCP Client”

Configuration Guide

NCP Remote Access VPN Client for Juniper SRX

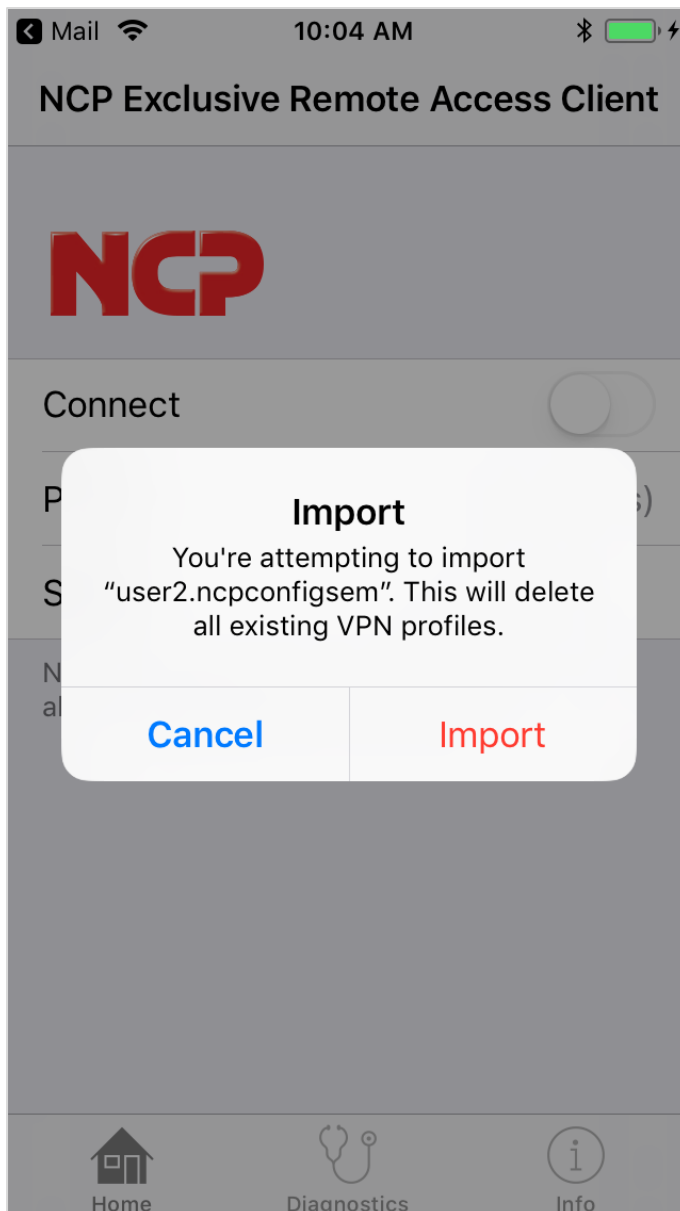


Configuration Guide

NCP Remote Access VPN Client for Juniper SRX



Click "Import" to start the import process

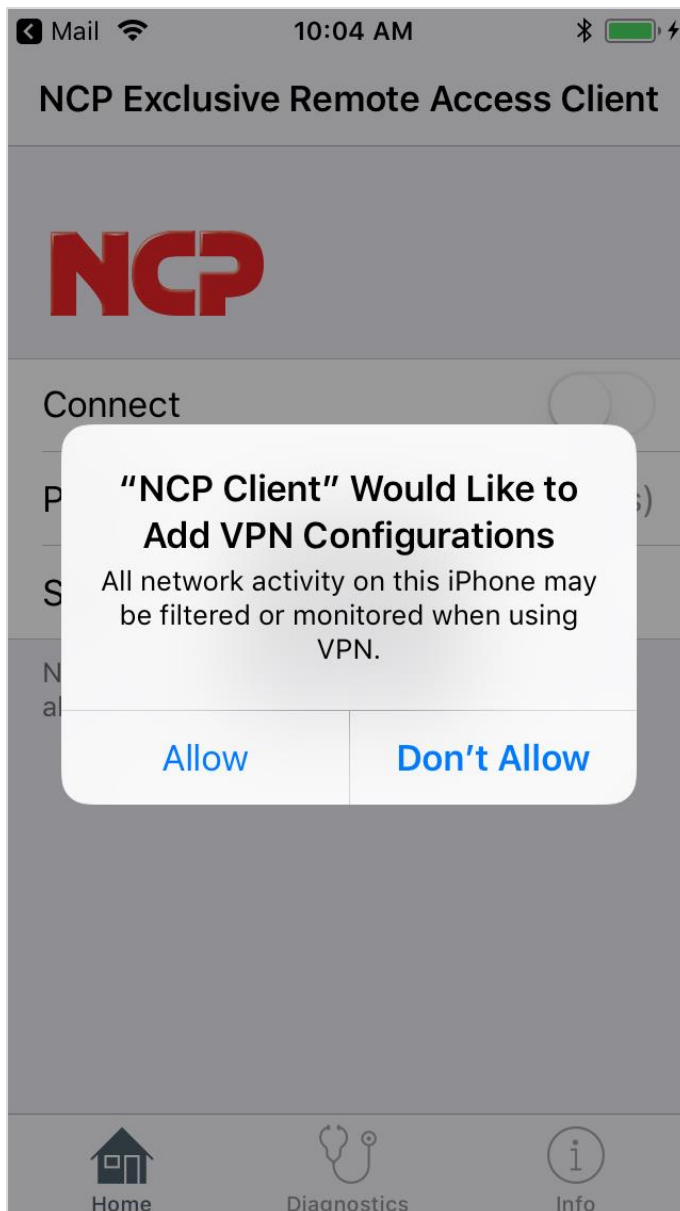


Configuration Guide

NCP Remote Access VPN Client for Juniper SRX



Allow to add a new VPN configuration by clicking on “Allow”



Configuration Guide

NCP Remote Access VPN Client for Juniper SRX

Enter you iPhone/iPad passcode to import the configuration

Enter iPhone passcode for
"Settings"
Add VPN Configurations

○ ○ ○ ○ ○ ○

1	2 ABC	3 DEF
4 GHI	5 JKL	6 MNO
7 PQRS	8 TUV	9 WXYZ
	0 +	

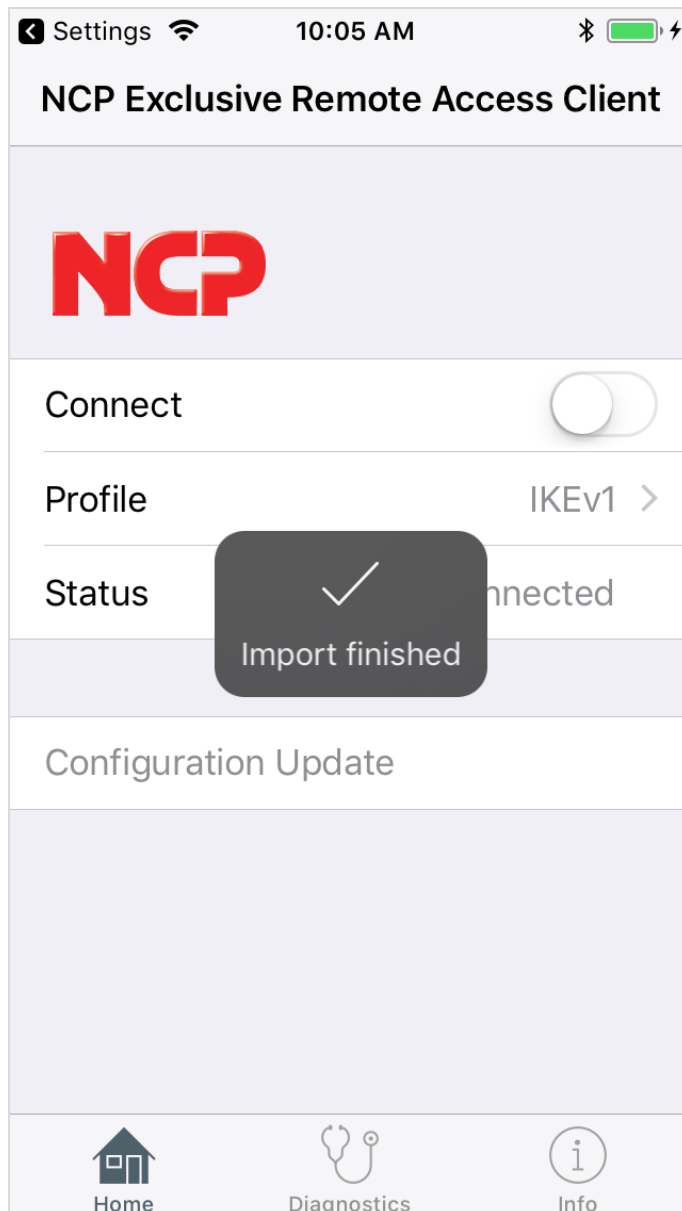
Cancel

Configuration Guide

NCP Remote Access VPN Client for Juniper SRX



The import of the configuration was successful



Configuration Guide

NCP Remote Access VPN Client for Juniper SRX



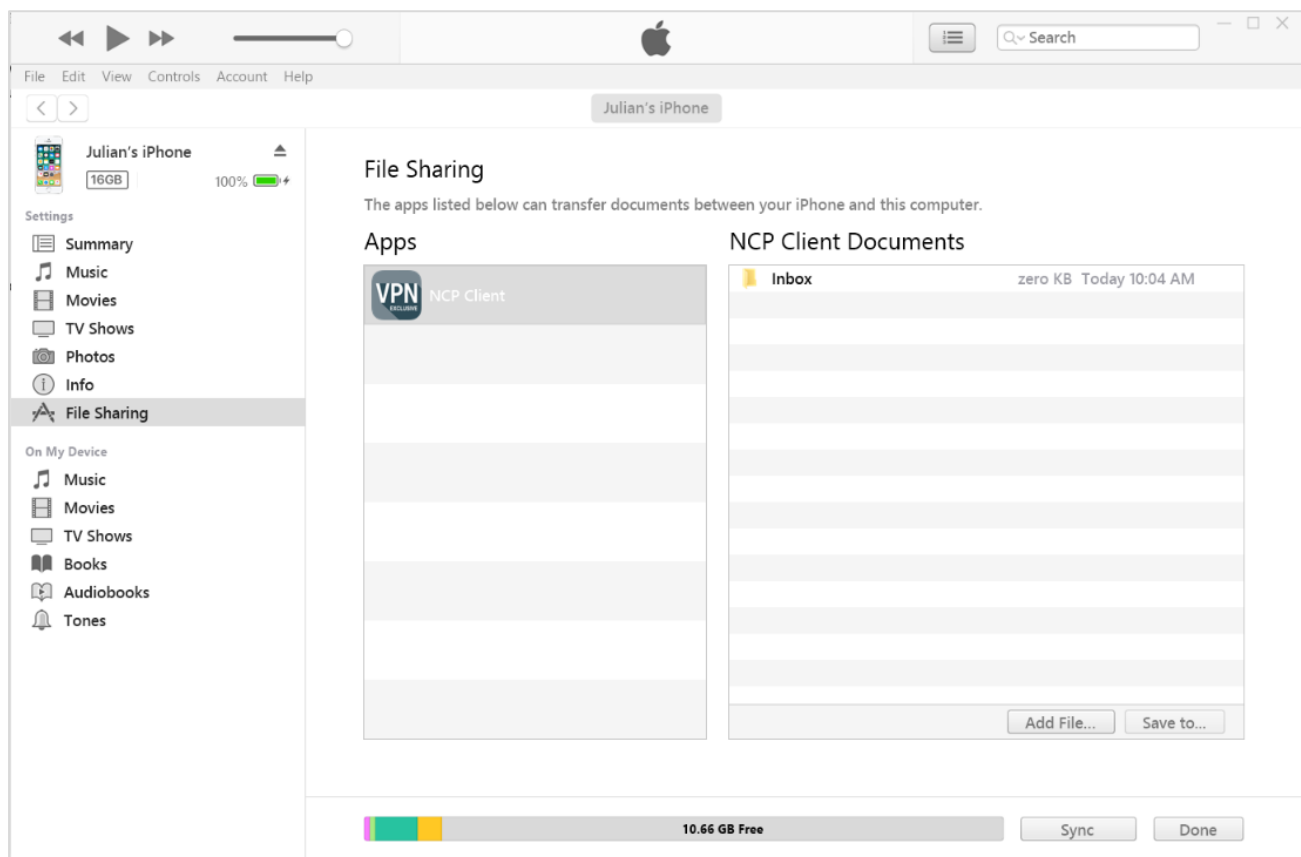
2) Import over iTunes

Connect the iOS device with your computer

Open iTunes on your computer

Click on the device button

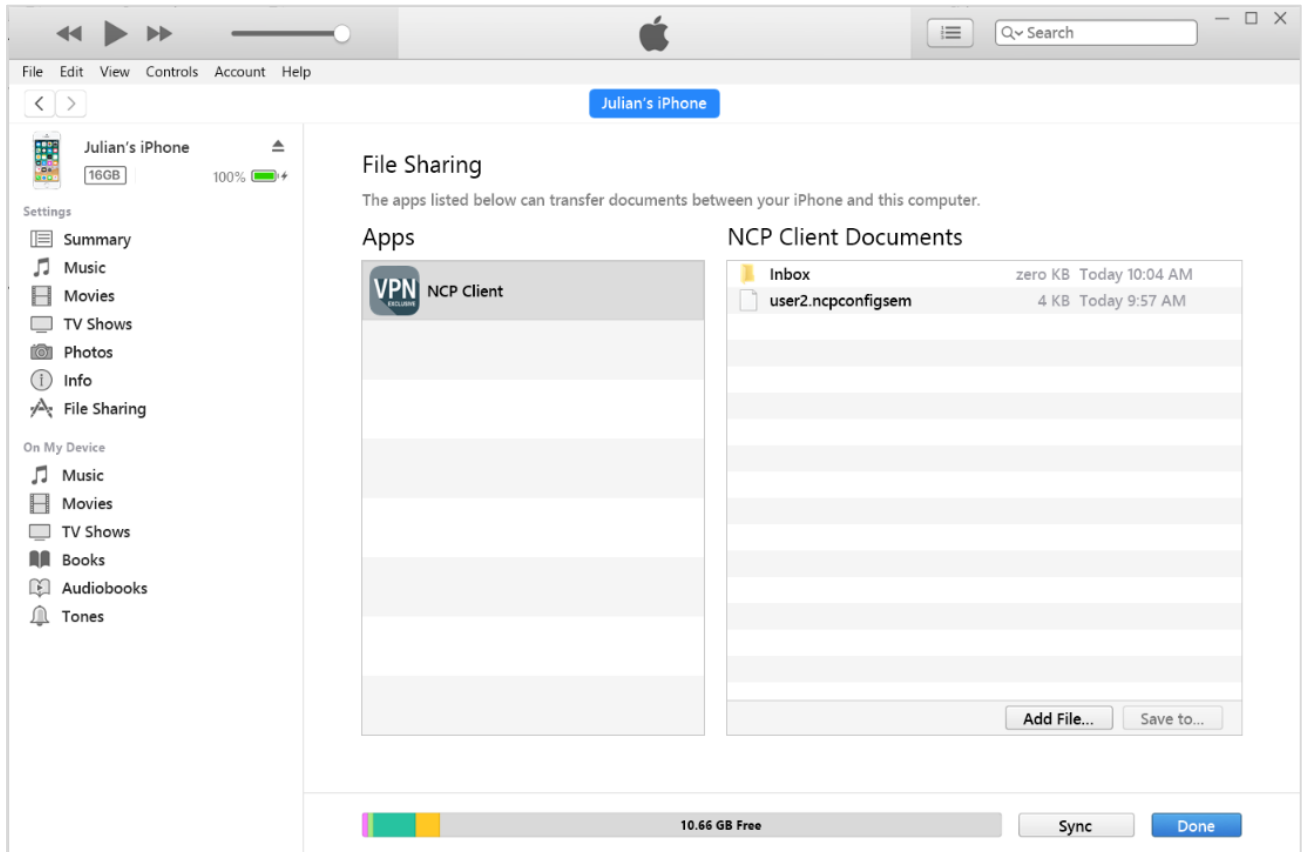
Go to File Sharing and click on NCP Client



Add the configuration via “Add File...” and click “Sync” to synchronize the information with the iOS device

Configuration Guide

NCP Remote Access VPN Client for Juniper SRX

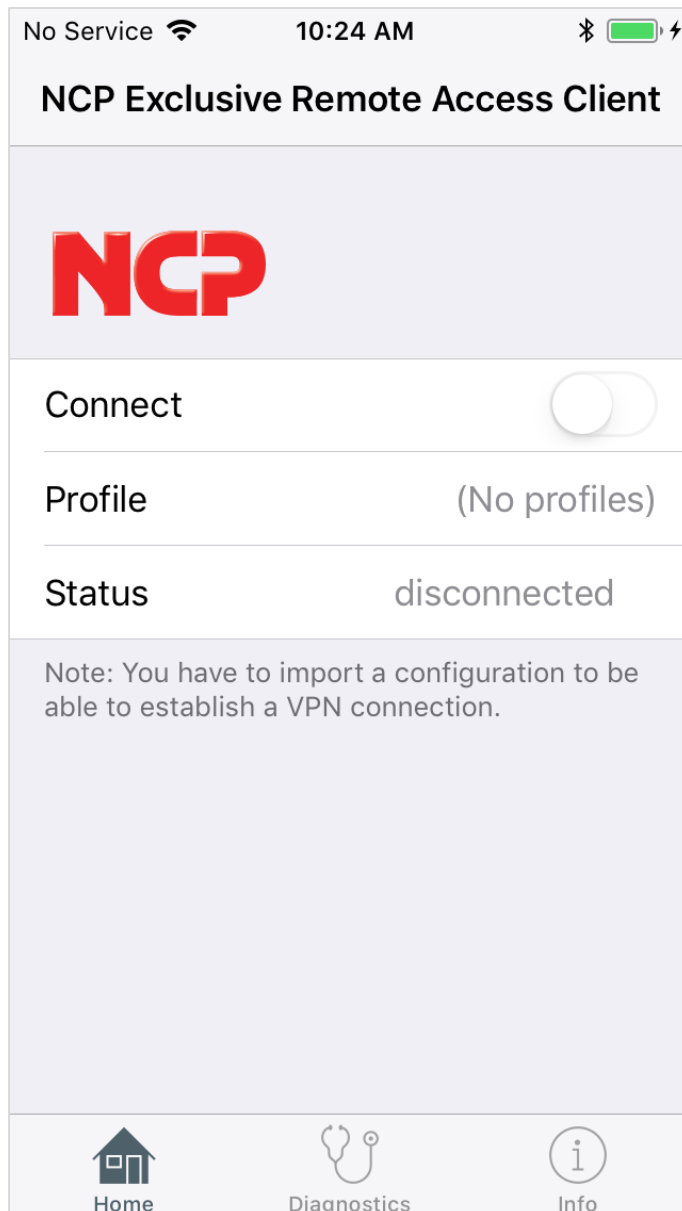


Configuration Guide

NCP Remote Access VPN Client for Juniper SRX



Open the App on the iOS device

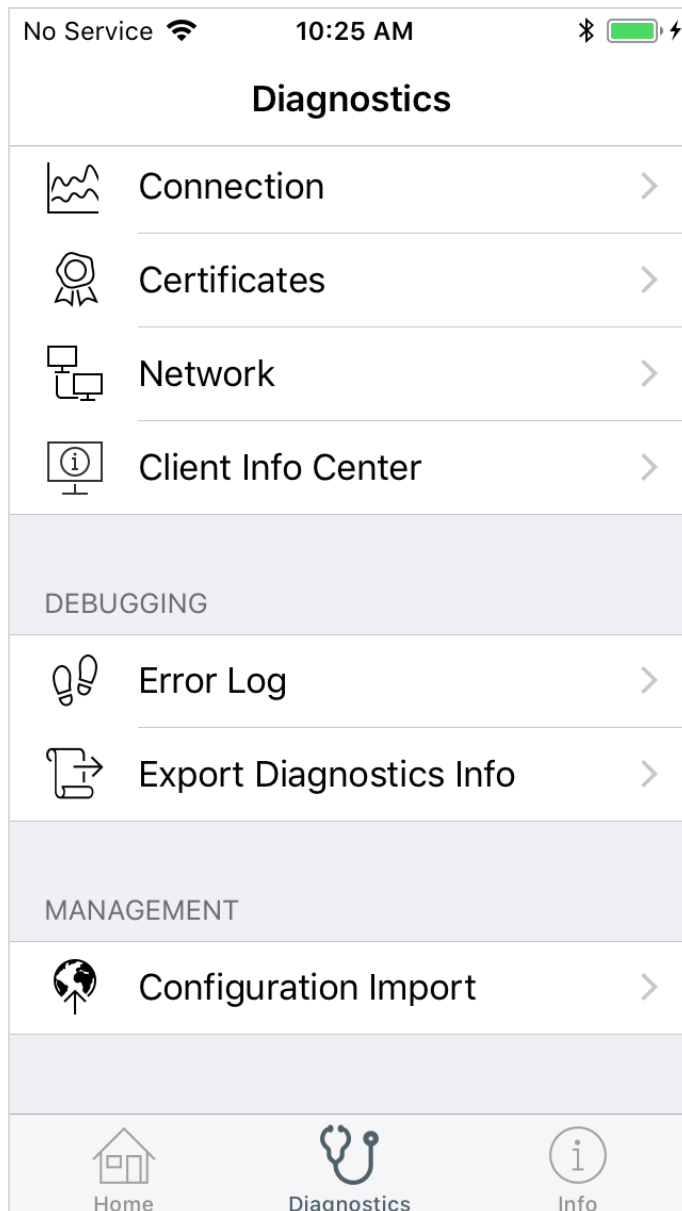


Configuration Guide

NCP Remote Access VPN Client for Juniper SRX



Go to “Diagnostics” and “Configuration Import”

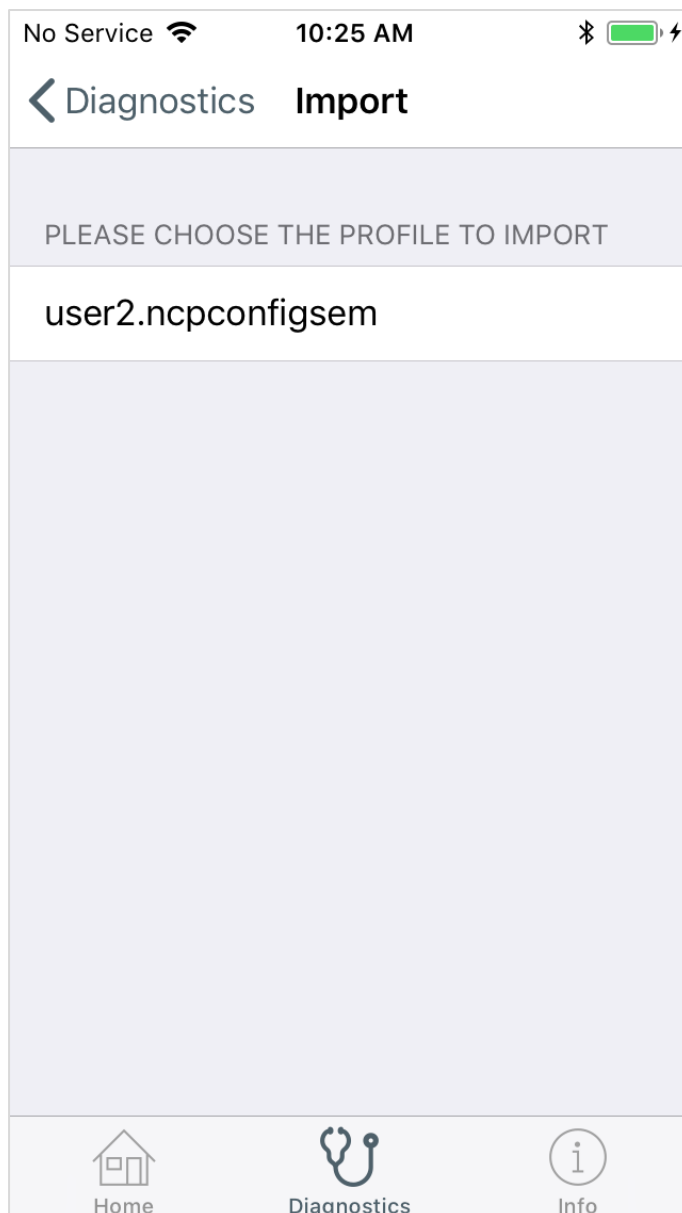


Configuration Guide

NCP Remote Access VPN Client for Juniper SRX



Click on the .ncpconfigsem file to start the import process

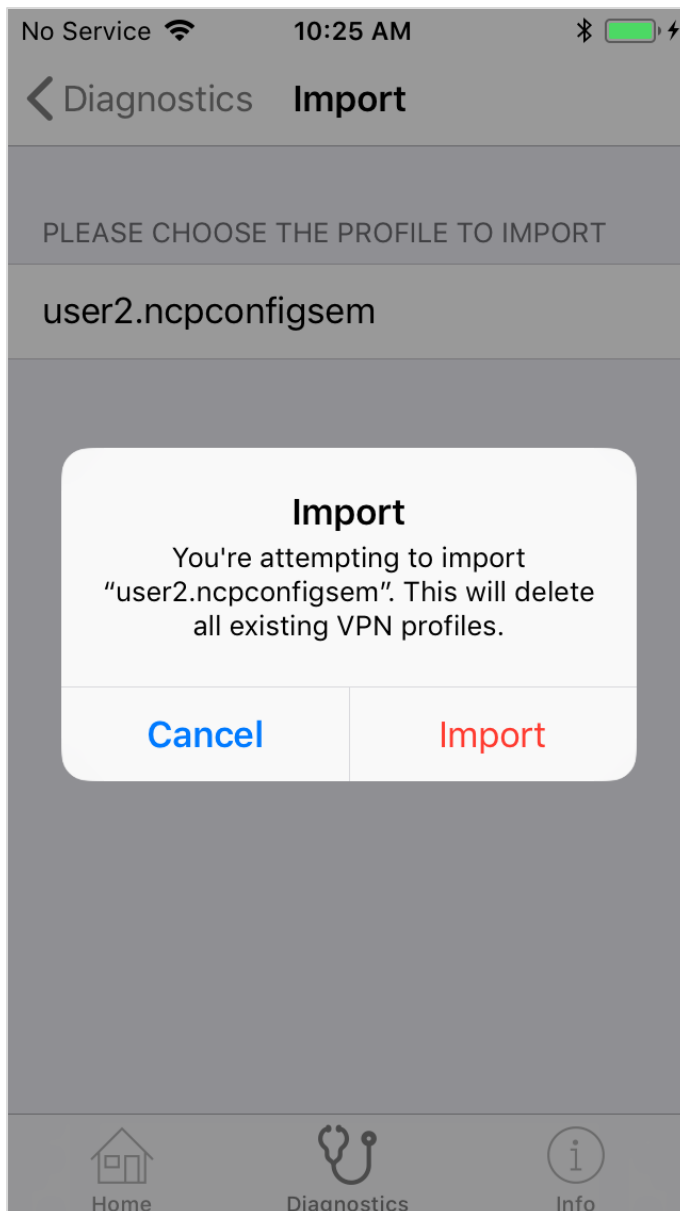


Configuration Guide

NCP Remote Access VPN Client for Juniper SRX



Click on "Import"

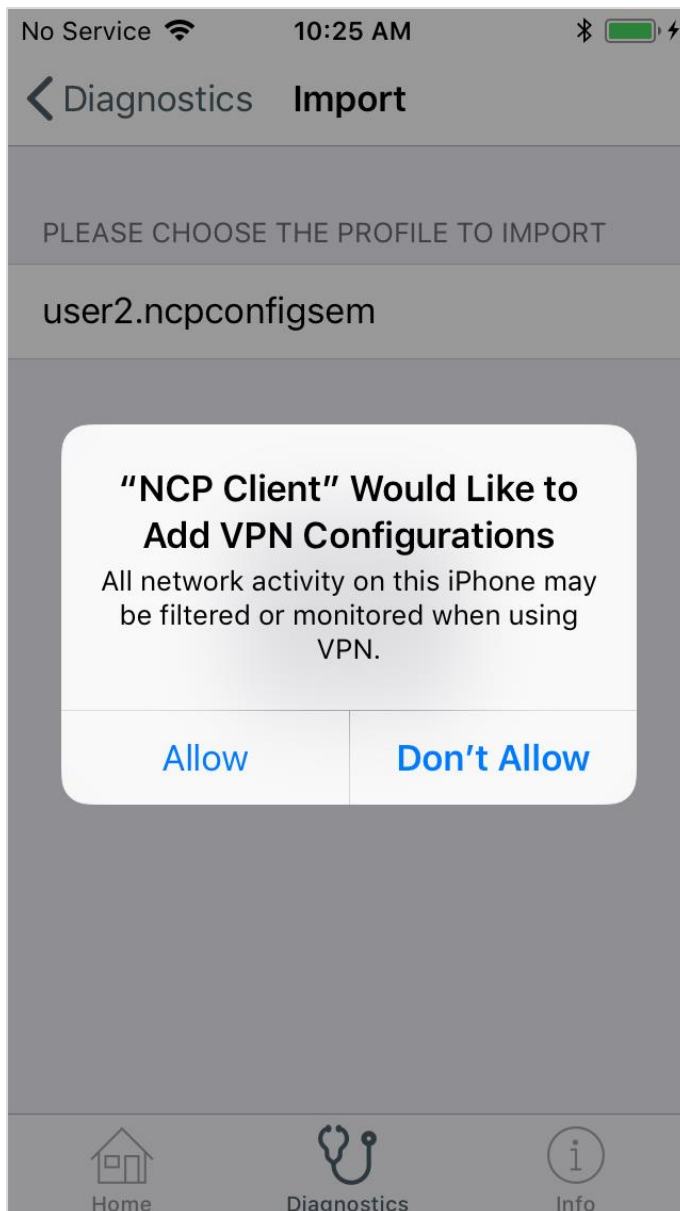


Configuration Guide

NCP Remote Access VPN Client for Juniper SRX



Click "Allow" to add another VPN configuration



Configuration Guide

NCP Remote Access VPN Client for Juniper SRX

Enter your iPhone/iPad passcode to import the configuration

Enter iPhone passcode
Add VPN Configurations

○ ○ ○ ○ ○ ○

1	2 ABC	3 DEF
4 GHI	5 JKL	6 MNO
7 PQRS	8 TUV	9 WXYZ
	0 +	

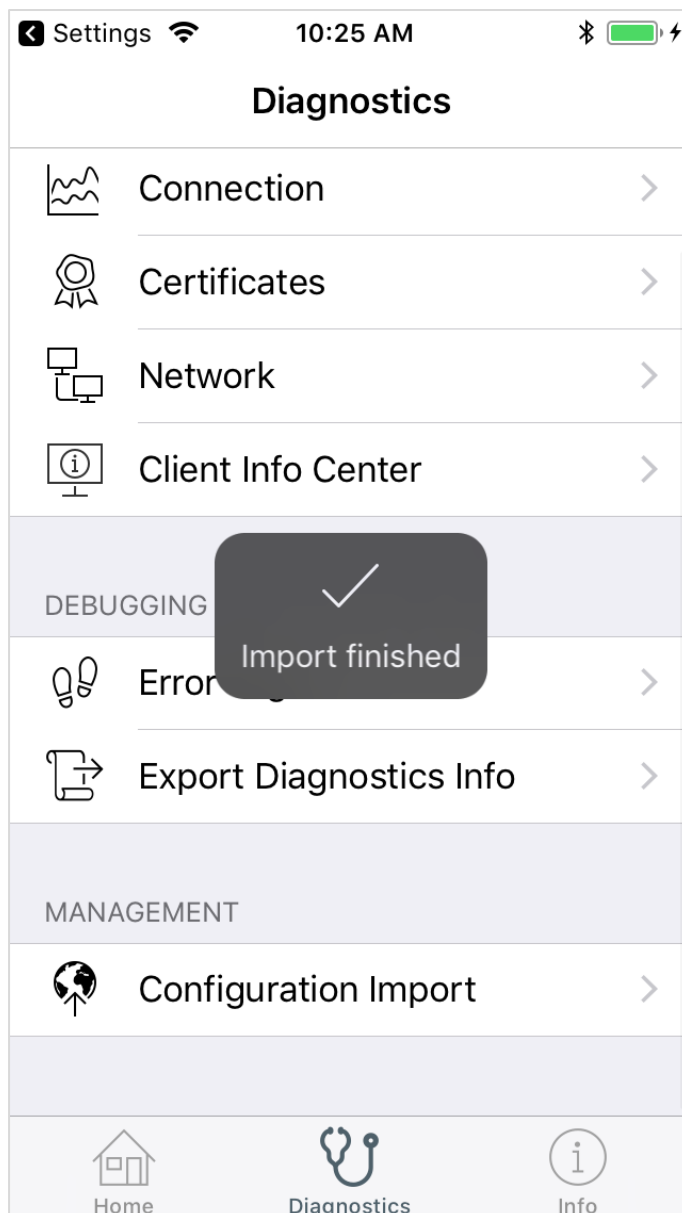
Cancel

Configuration Guide

NCP Remote Access VPN Client for Juniper SRX



The import of the configuration was successful

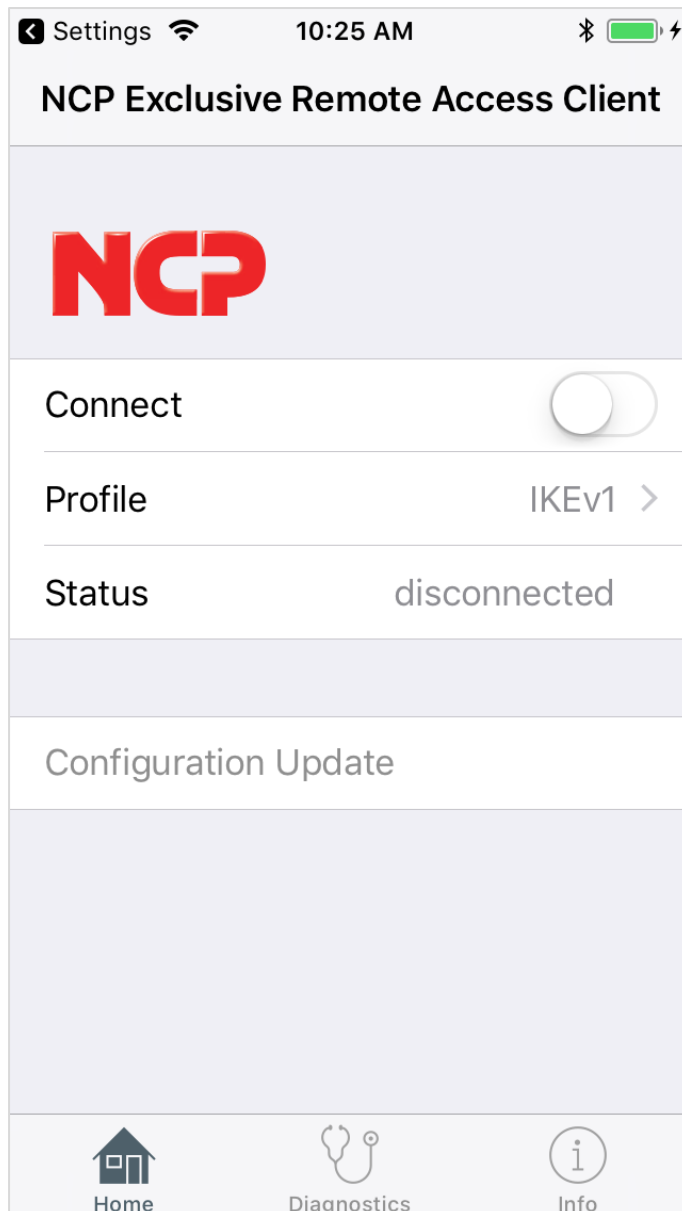


Configuration Guide

NCP Remote Access VPN Client for Juniper SRX



Click the slide button to establish the VPN connection



Configuration Guide

NCP Remote Access VPN Client for Juniper SRX

